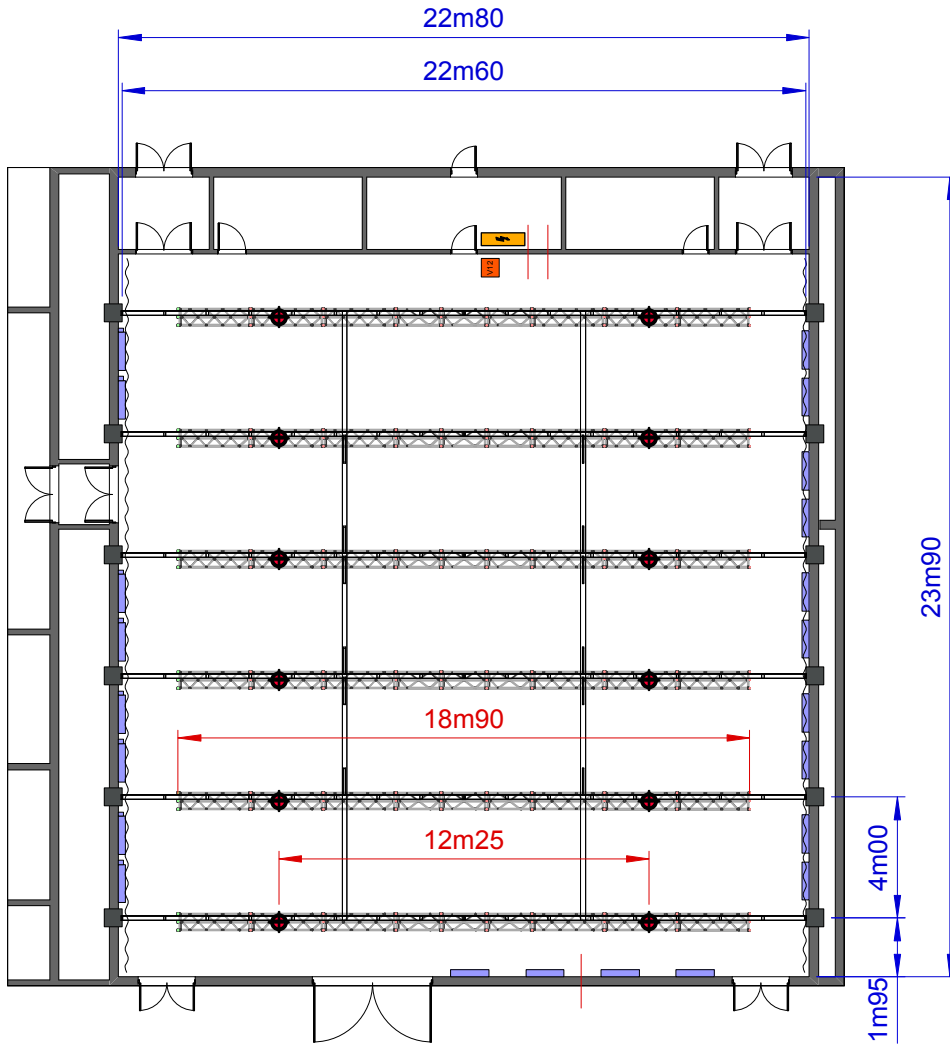
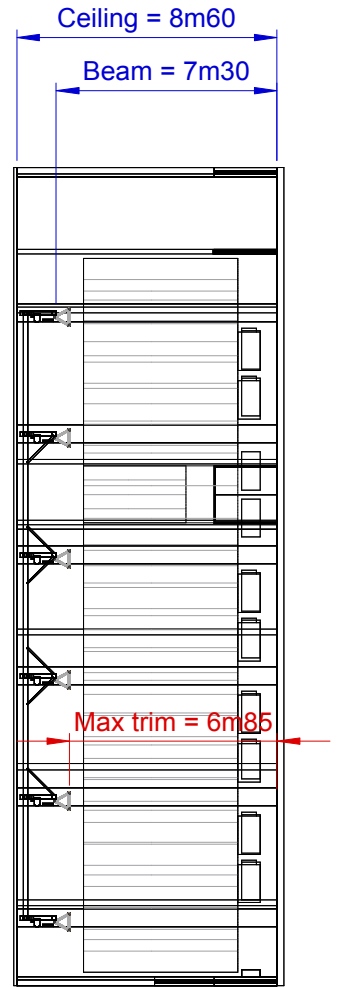


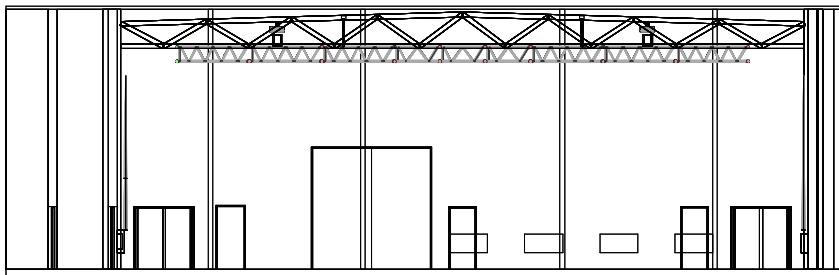
Topview



Sideview



Frontview



Dimensions Studio

Surface studiofloor = 545m²
 Dimensions Entrance Gate = 3m90W x 4m00H


Dimensions Beams Studio

Height to beams = 07m30
 Height to ceiling = 08m60
 Distance between beams = 04m00


Loading Figures Beams Studio

Max. load/beam = 4000kg/beam or qload = 200kg/m
 Max. allowed loads/beam:
 - center point (CPL) = 1700 kg (middle of a beam)
 - double point (TPL) = 1400 kg (each point on 1/3th of the total beam length)
 Max allowed floorpressure = 1000kg/m²

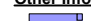
Electrical Power

1 x 400A Powerlock connection
 2 x CEE125A connection 5p (3PH+N+E)
 2 x CEE32A connection 5p (3PH+N+E)
 Cable passages to backstage area and technical area
 Main Circuit board

Standard Rigging & Trussing

06 x Black ALC Truss, length = 18m90
 Each truss rigged on 2 x 1T Hoist
 Span between hoists = 12m25
 Maximum trim = 06m85
 All hoist rigged upside down
 01 x V12 Hoistcontroller
 The hoistcontroller is connected to one of the existing CEE32A connectors, but can be unplugged if required.

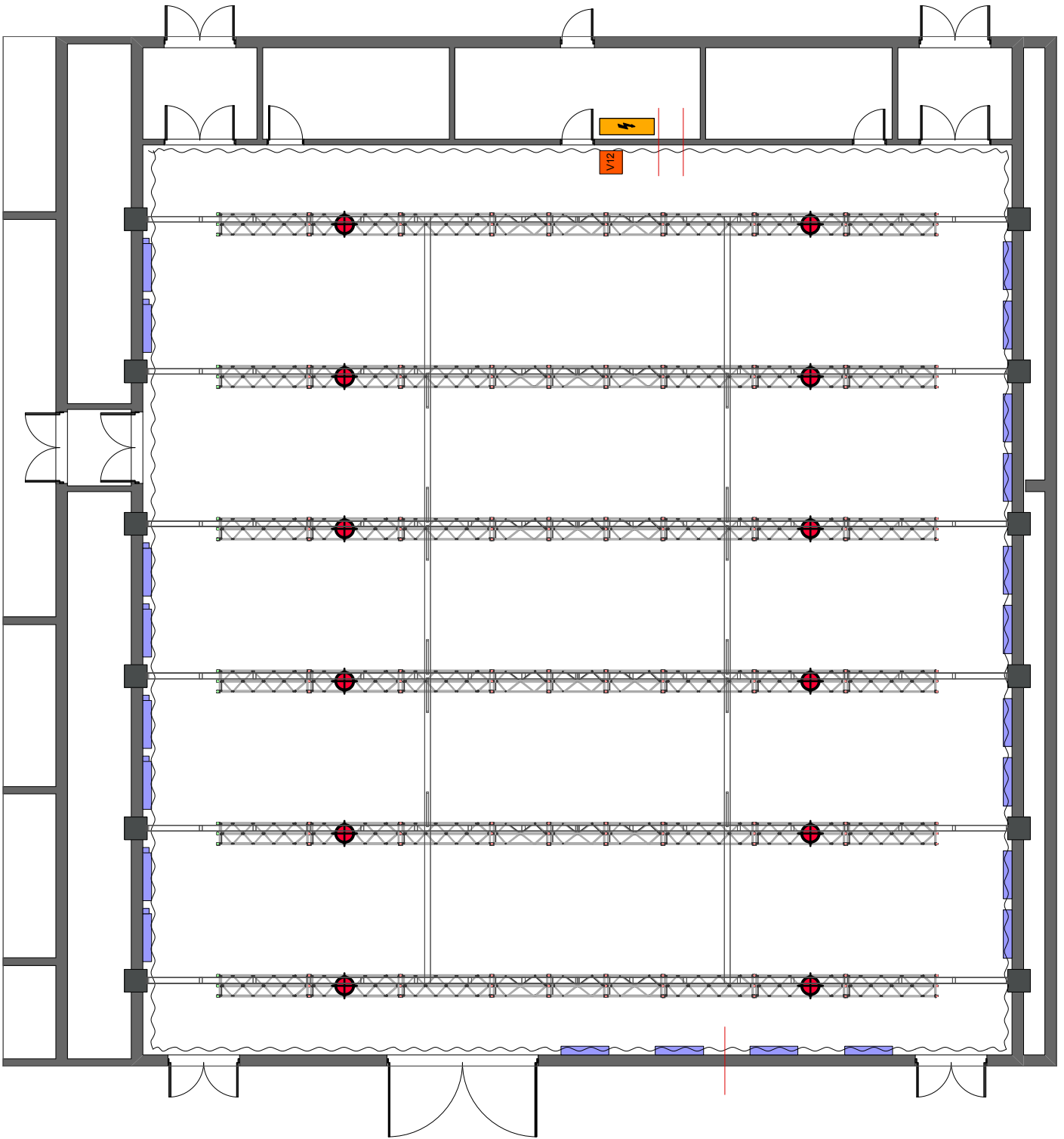
Other Information:

 The studio is equipped with an airco-system, which is installed at 55cm above floor level (see plan for exact locations).



AED Studios
 Fabrikstraat 38
 2547 Lint
 Belgium
 www.aedstudios.com

Studio/Room	Studio 03	Papersize A4
Plan type	Overview	Units [mm]
		Scale 1:250
		Version V1.0



 <p> AED Studios Fabrikstraat 38 2547 Lint Belgium www.aedstudios.com </p>	Studio/Room	Studio 03	Papersize A4
	Plan type	Empty Plot	Units [mm]
			Scale 1:150
			Version V1.0