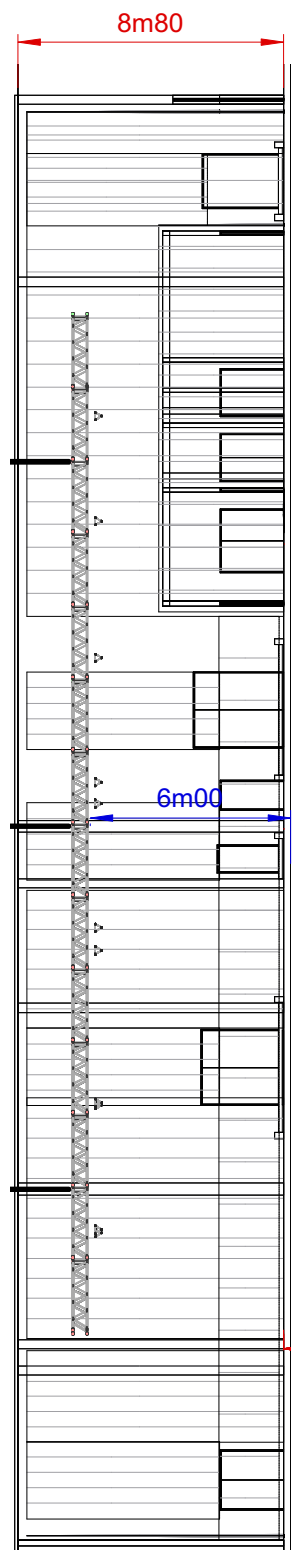


Dimcity fixed installation



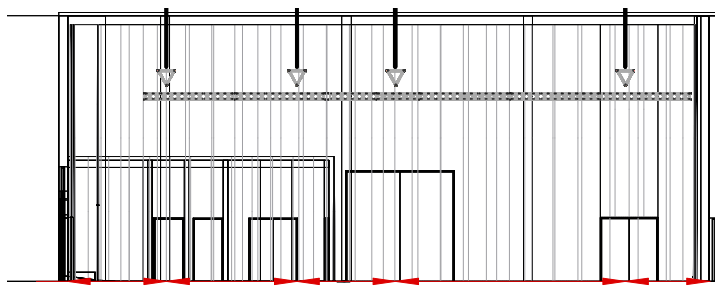
Dimensions Studio
 Surface studiofloor = 800m²
 Dimensions Entrance Gate = 4m10W x 3m80H

Dimensions Beams Studio
 Height to ceiling = 08m80

Loading figures Floor Studio
 Max Floor pressure = 1000kg/m²

Electrical Power
 1 x CEE125A connection 5p (3PH+N+E)
 1 x CEE63A connection 5p (3PH+N+E)
 1 x CEE32A connection 5p (3PH+N+E)
 Cable passages to backstage area and technical area
 Main Circuit board

Standard Rigging & trussing
 1 x Self standing ALC Truss structure (Stage)
 1 x H40V Trussing for projectors
 2 x ALC Trusses for audience light
 1 x Trusskit X30D Reception Area (Circle 5m + truss 10m)
 Details >> See plans



AED Studios
 Fabriekstraat 38
 2547 Lint
 Belgium
 www.aedstudios.com

Studio/Room	Studio 11	Papersize A4
Plan type	Overview	Units [mm]
		Scale 1:250
		Version V2.0