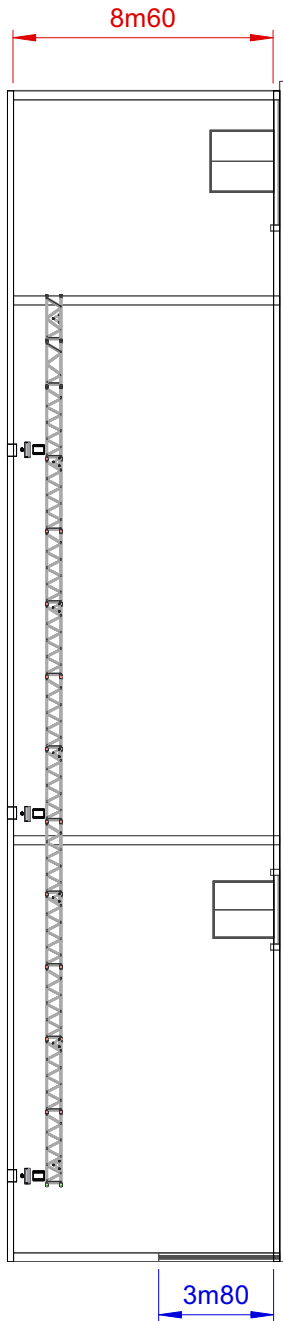
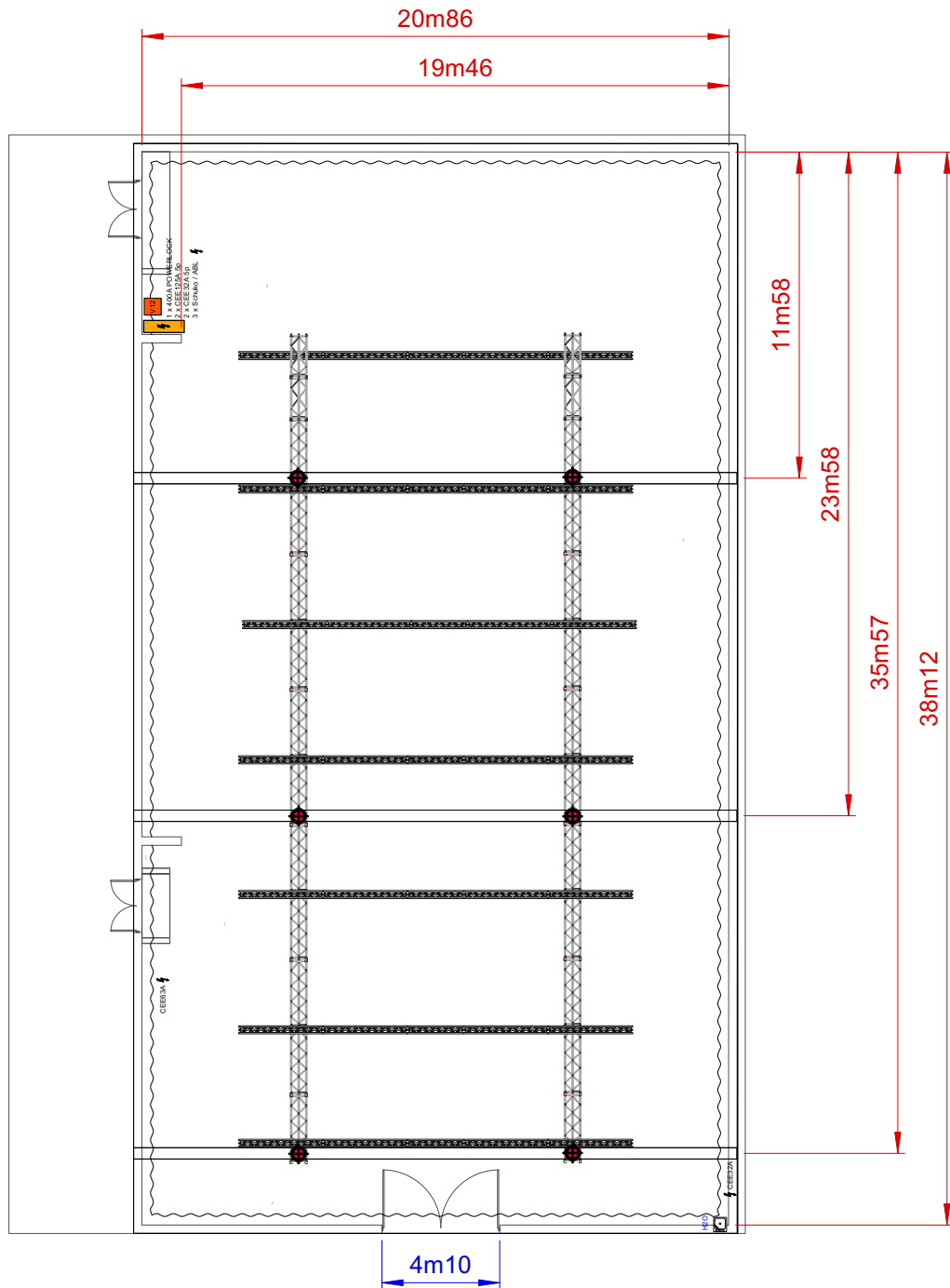


**Sideview****Topview****Dimensions Studio**

Surface studiofloor = 800m<sup>2</sup>  
 Dimensions Entrance Gate = 4m10W x 3m80H

**Dimensions Beams Studio**

Height to ceiling = 08m20

**Loading figures Main span Studio**

Max Load main span "Total" = 2500kg  
 Max Load main span "UDL" = 5 x 500kg  
 Max Load main span "TPL" = 1250kg

**Loading figures Floor Studio**

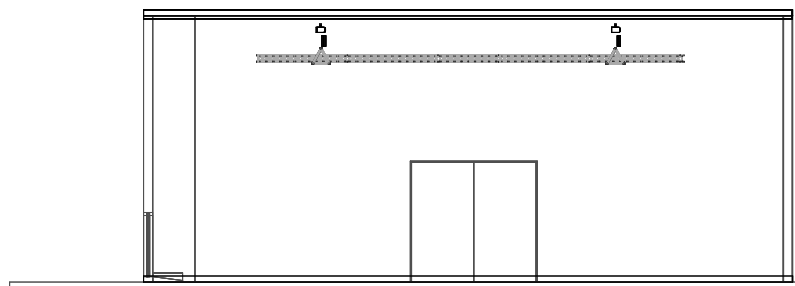
Max Floor pressure = 1000kg/m<sup>2</sup>

**Electrical Power**

1 x 400A Powerlock connection  
 2 x CEE125A connection 5p (3PH+N+E)  
 2 + 1 x CEE32A connection 5p (3PH+N+E)  
 3 x ABL/Schuko 16A

**Standard Rigging & trussing**

02 x Black ALC Truss, length = 29m40  
 Each truss rigged on 3 x 1T Hoist  
 Span between hoists = See plan  
 Maximum trim = 07m20  
 All hoist rigged upside down  
 07 x Black X30D Truss, length = 14m00  
 Trusses installed in ALC Trusses

**Frontview**


**AED Studios**  
 Fabrikstraat 38  
 2547 Lint  
 Belgium  
 www.aedstudios.com

Studio/Room	<b>Studio 14</b>	Papersize A4
Plan type	<b>Overview</b>	Units [mm]
		Scale 1:250
		Version V2.0