

# STUDIO 9

## DIMENSIONS

STAGE FLOOR	1.200M <sup>2</sup> (12.917FT <sup>2</sup> )
LENGTH	40M (131FT)
WIDTH	30M (98FT)
HEIGHT TO BEAMS (A)	8.38M (27FT)
DISTANCE BETWEEN BEAMS	5M (16FT)
HEIGHT TO BEAMS (B)	10.28M (34FT)
HEIGHT TO CEILING	10.3M (34FT)
FLOOR LOAD	2TON/M <sup>2</sup> (47.470LBS/FT <sup>2</sup> )
GATE	3,5M X 4,2M (11FT X 14FT)

## POWER

2X 125A CEE  
2X 32A CEE  
2X 400A POWERLOCK

## OTHERS

HEATING SYSTEM

## CAPACITY

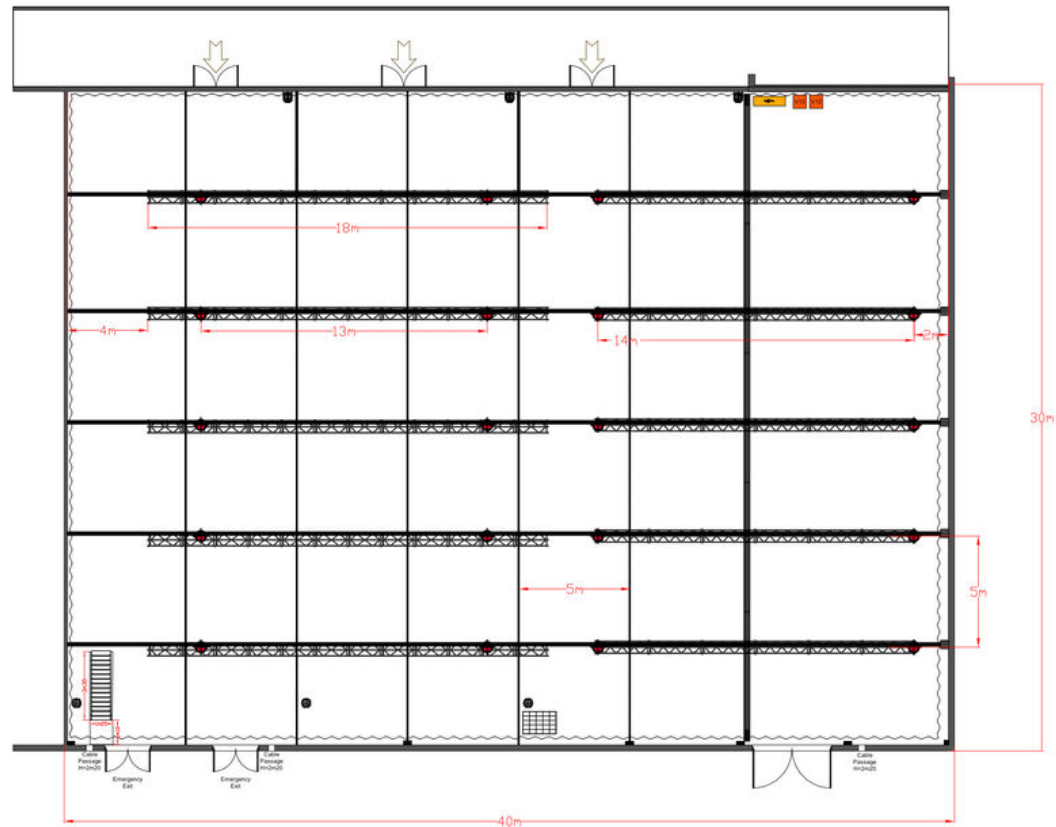
DINNER: 450P  
RECEPTION: 1.200P  
ACADEMIC: 750P

## BACKGROUND

BLACK BACKDROP: 120M (394FT)



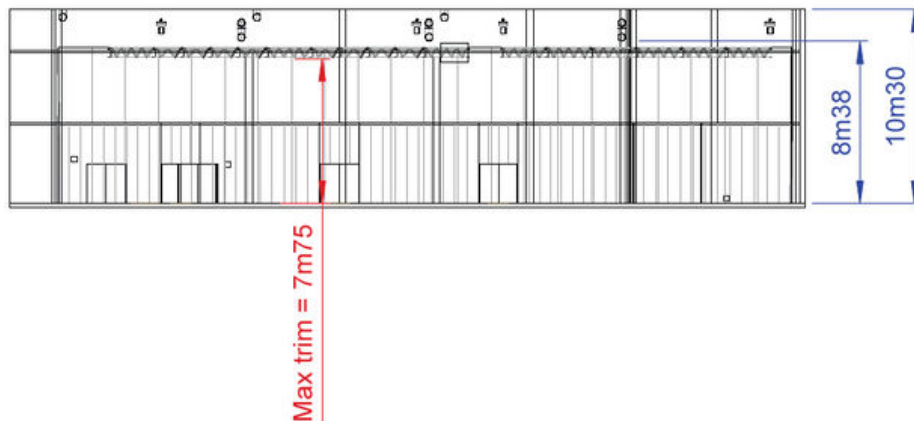
**TOPVIEW**



**SIDEVIEW**



**FRONTVIEW**



## **DIMENSIONS STUDIO**

SURFACE STUDIO FLOOR	1.200M <sup>2</sup>
DIMENSIONS ENTRANCE GATE	3M50 (W) X 4M10 (H)

## **DIMENSIONS BEAMS STUDIO**

HEIGHT TO BEAMS	8M38
HEIGHT TO CEILING	10M30
DISTANCE BETWEEN BEAMS	5M

## **LOADING FIGURES BEAMS**

MAX ALLOWED FLOOR PRESSURE	2000KG/M <sup>2</sup>
----------------------------	-----------------------

## **ELECTRICAL POWER**

- 2X 400A POWERLOCK CONNECTION
- 2X CEE 125A CONNECTION 5P (3PH + N + E)
- 3X CEE 32A CONNECTION 5P (3PH + N + E)
- CABLE PASSAGES TO BACKSTAGE AND TECHNICAL AREA
- MAIN CIRCUIT BOARD

## **RIGGING & TRUSSING**

- 6X BLACK ALC TRUSS - L = 19M20
- 6X BLACK ALC TRUSS - L = 14M20
- EACH TRUSS RIGGED ON 2X IT HOIST
- SPAN BETWEEN HOISTS - SEE PLAN
- MAXIMUM TRIM = 7M75
- ALL HOISTS RIGGED UPSIDE DOWN
- 2X V12 HOIST CONTROLLER
- THE CONTROLLERS ARE CONNECTED TO TWO OF THE EXISTING CEE 32A CONNECTORS - CAN BE UNPLUGGED, IF REQUIRED

# STUDIO 9

