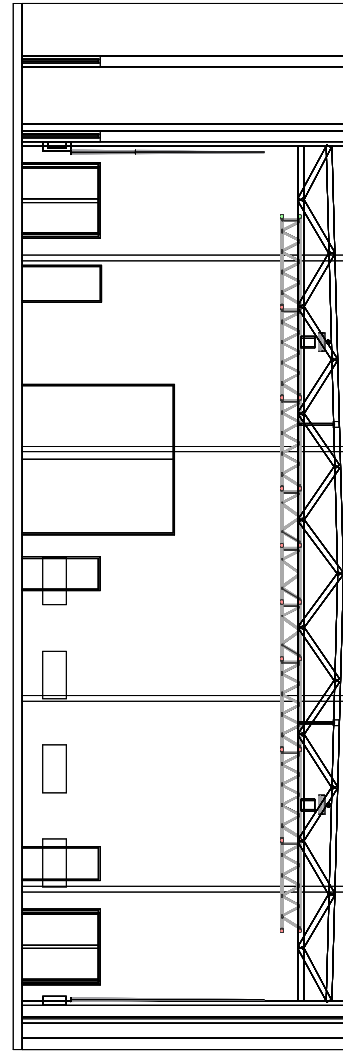
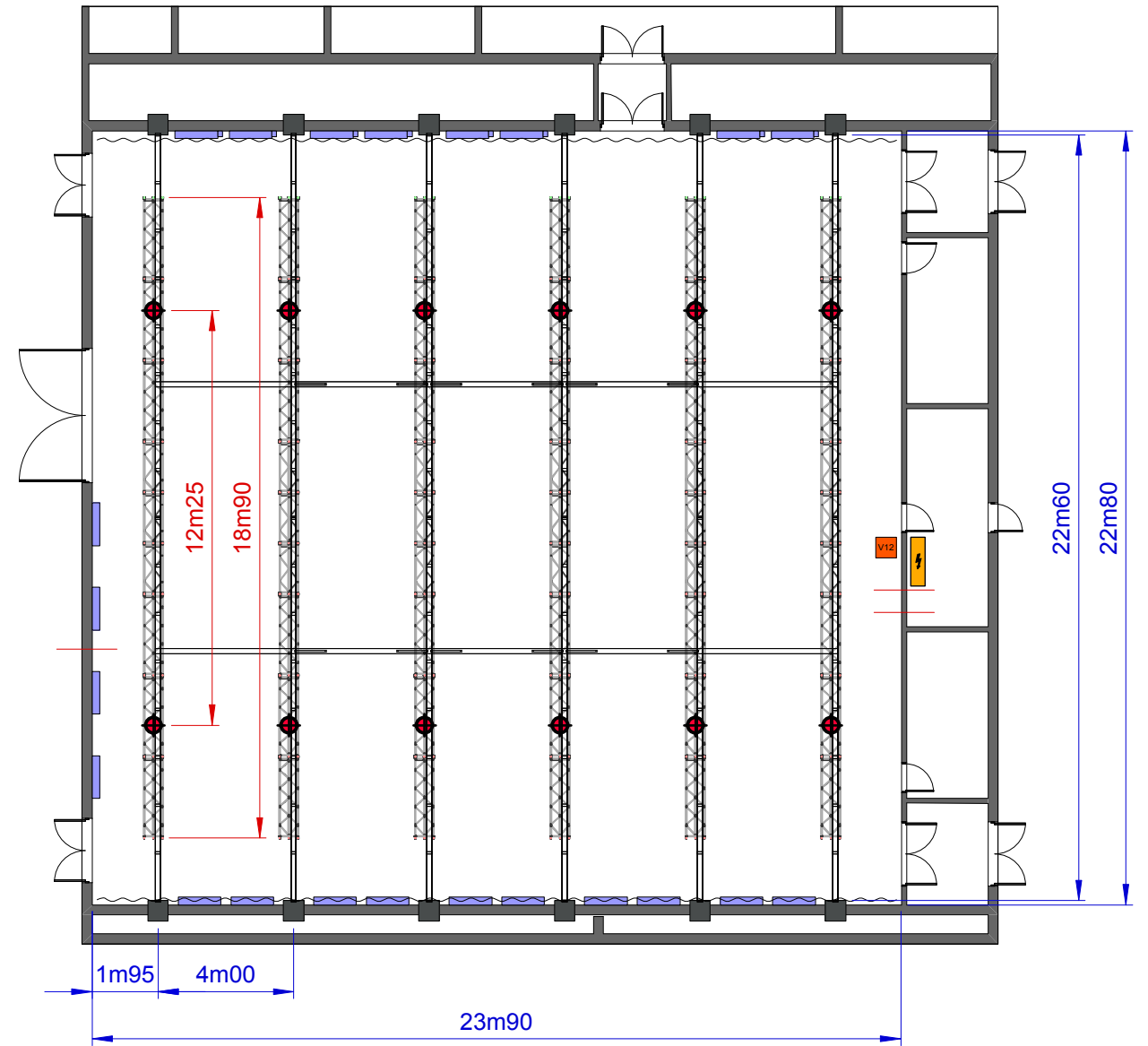


Frontview



Topview



**Dimensions Studio**  
 Surface studiofloor = 545m<sup>2</sup>  
 Dimensions Entrance Gate = 3m90W x 4m00H

**Dimensions Beams Studio**  
 Height to beams = 07m30  
 Height to ceiling = 08m60  
 Distance between beams = 04m00

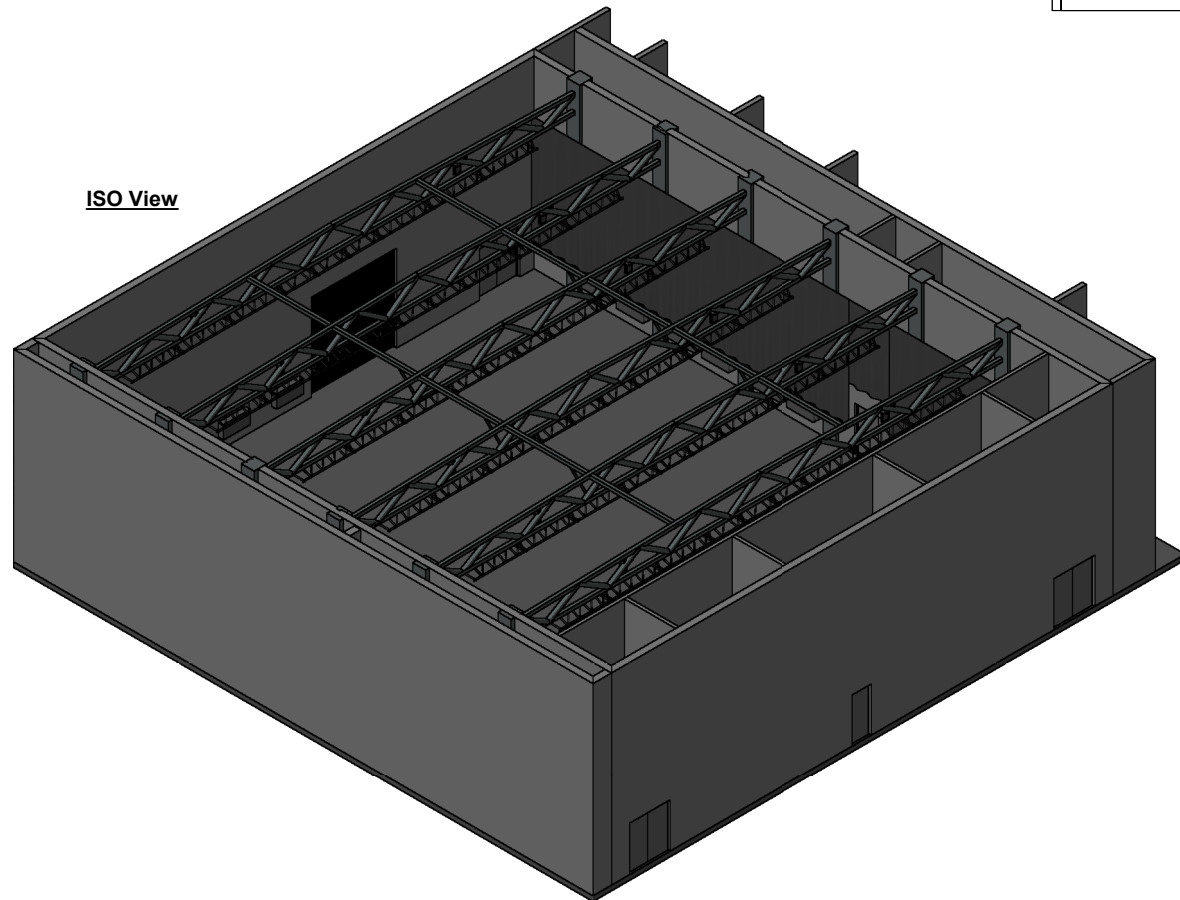
**Loading Figures Beams Studio**  
 Max. load/beam = 4000kg/beam or qload = 200kg/m  
 Max. allowed loads/beam:  
 - center point (CPL) = 1700 kg (middle of a beam)  
 - double point (TPL) = 1400 kg (each point on 1/3th of the total beam length)  
 Max allowed floorpressure = 1000kg/m<sup>2</sup>

**Electrical Power**  
 1 x 400A Powerlock connection  
 2 x CEE125A connection 5p (3PH+N+E)  
 2 x CEE32A connection 5p (3PH+N+E)  
 Cable passages to backstage area and technical area  
 Main Circuit board

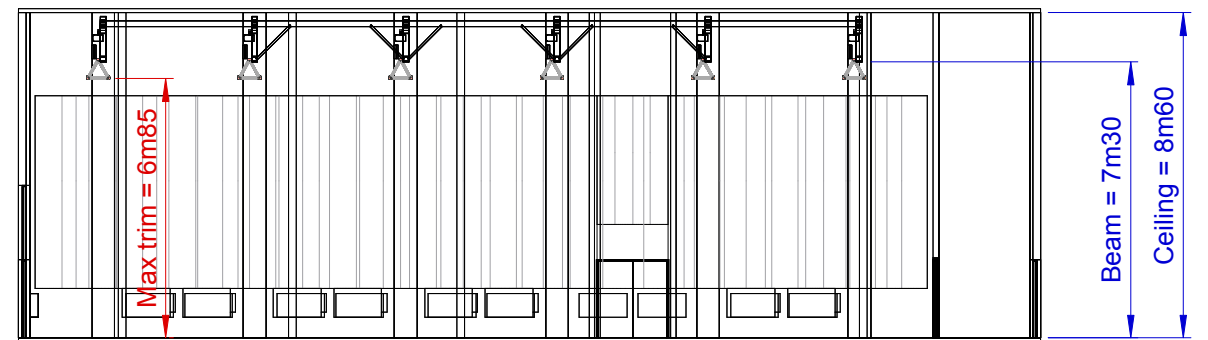
**Standard Rigging & Trussing**  
 06 x Black ALC Truss, length = 18m90  
 Each truss rigged on 2 x 1T Hoist  
 Span between hoists = 12m25  
 Maximum trim = 06m85  
 All hoist rigged upside down  
 01 x V12 Hoistcontroller  
 The hoistcontroller is connected to one of the existing CEE32A connectors, but can be unplugged if required.

**Other Information:**  
 The studio is equipped with an airco-system, which is installed at 55cm above floor level (see plan for exact locations).

ISO View

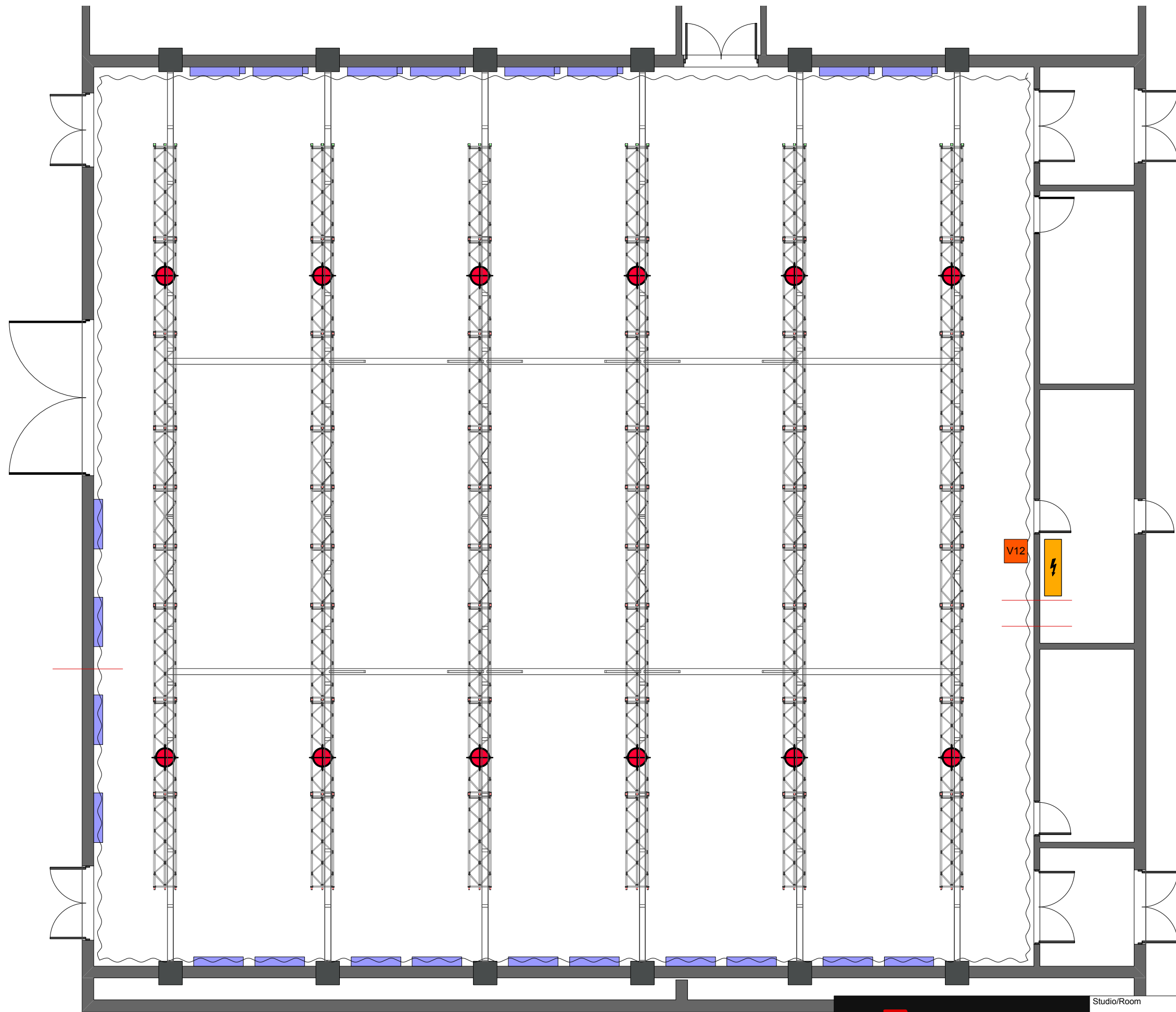


Sideview




**AED Studios**  
 Fabriekstraat 38  
 2547 Lint  
 Belgium  
 www.aedstudios.com

Studio/Room	<b>Studio 03</b>	Papersize	A3
Plan type	<b>Overview</b>	Units	[mm]
		Scale	1:200
		Version	V1.0




**AED Studios**  
 Fabriekstraat 38  
 2547 Lint  
 Belgium  
[www.aedstudios.com](http://www.aedstudios.com)

Studio/Room	<b>Studio 03</b>	Papersize A3
Plan type	<b>Empty Plot</b>	Units [mm]
		Scale 1:100
		Version V1.0