

**Dimensions Studio**

Surface studiofloor = 281m<sup>2</sup>  
 Dimensions Entrance Gate = 2m50W x 2m60H

**Dimensions Beams Studio**

Height to beams = 07m30  
 Height to ceiling = 08m60  
 Distance between beams = 04m00

**Loading Figures Beams Studio**

Max. load/beam = 4000kg/beam or qload = 200kg/m  
 Max. allowed loads/beam  
 - center point (CPL) = 1700 kg (middle of a beam)  
 - double point (TPL) = 1400 kg (each point on 1/3th of the total beam length)  
 Max allowed floorpressure = 1000kg/m<sup>2</sup>

**Electrical Power**

2 x CEE125A connection 5p (3PH+N+E)  
 2 x CEE32A connection 5p (3PH+N+E)  
 Cable passages to backstage area and technical area  
 Main Circuit board

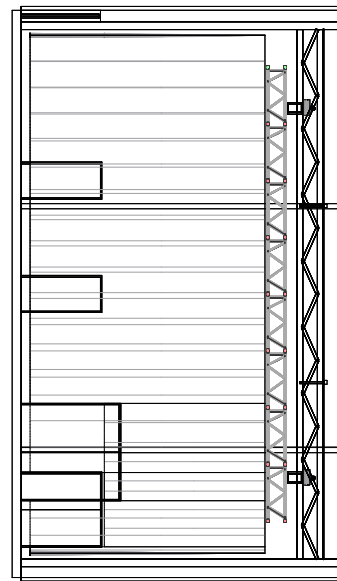
**Standard Rigging & Trussing**

05 x Black ALC Truss, length = 12m00  
 Each truss rigged on 2 x 0,5T Hoist  
 Span between hoists = 09m78  
 Maximum trim = 06m50  
 All hoist rigged upside down  
 01 x V12 Hoistcontroller  
 The hoistcontroller is connected to one of the existing CEE32A connectors, but can be unplugged if required.

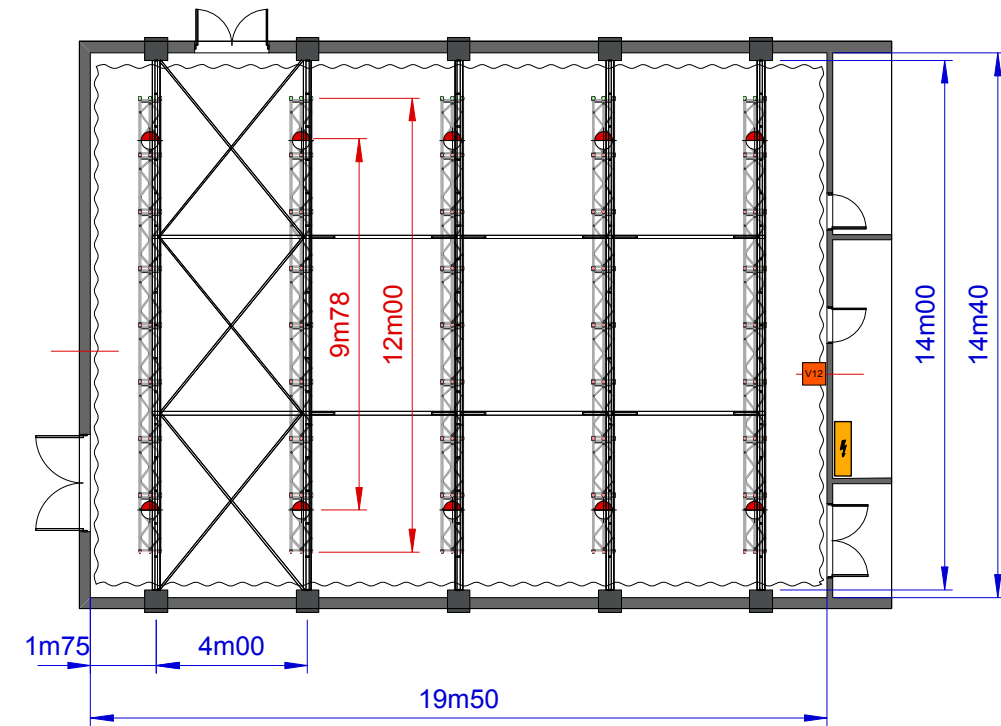
**Other Information:**

The studio is equipped with a heating system.

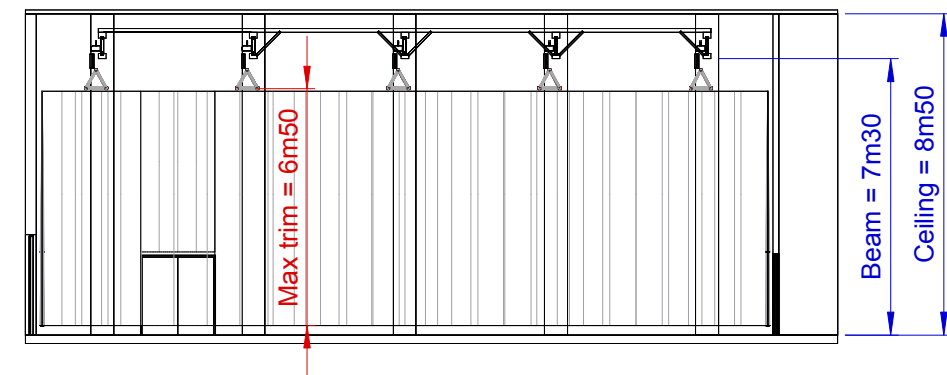
**Frontview**



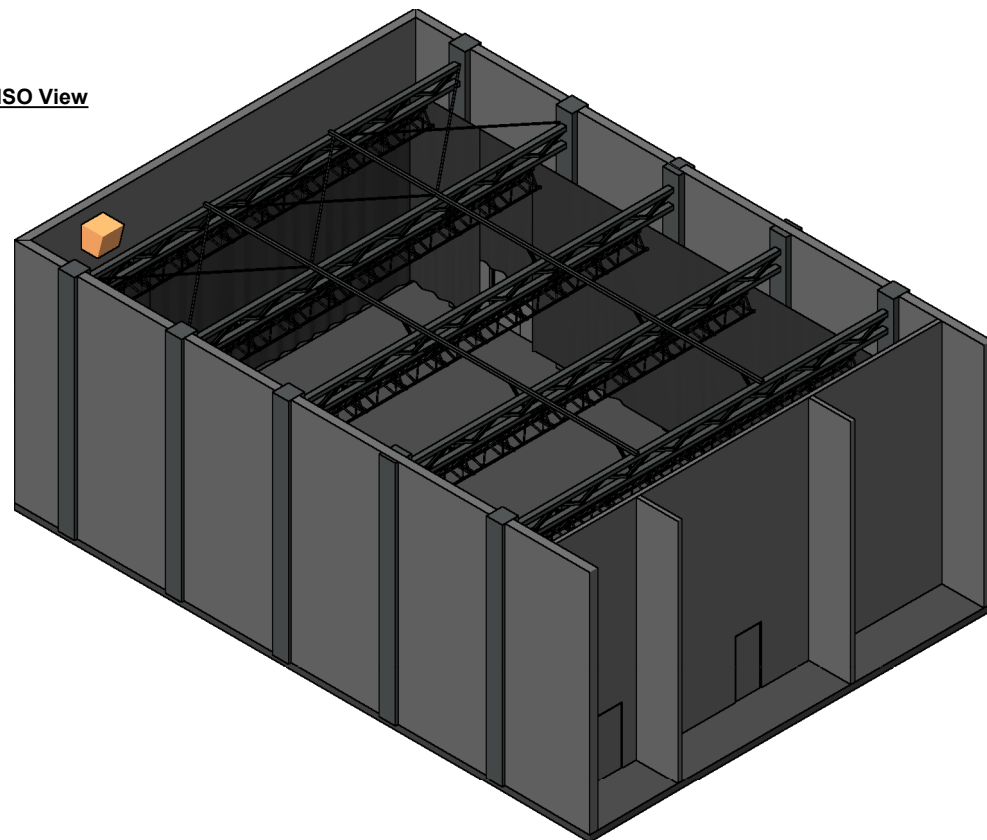
**Topview**



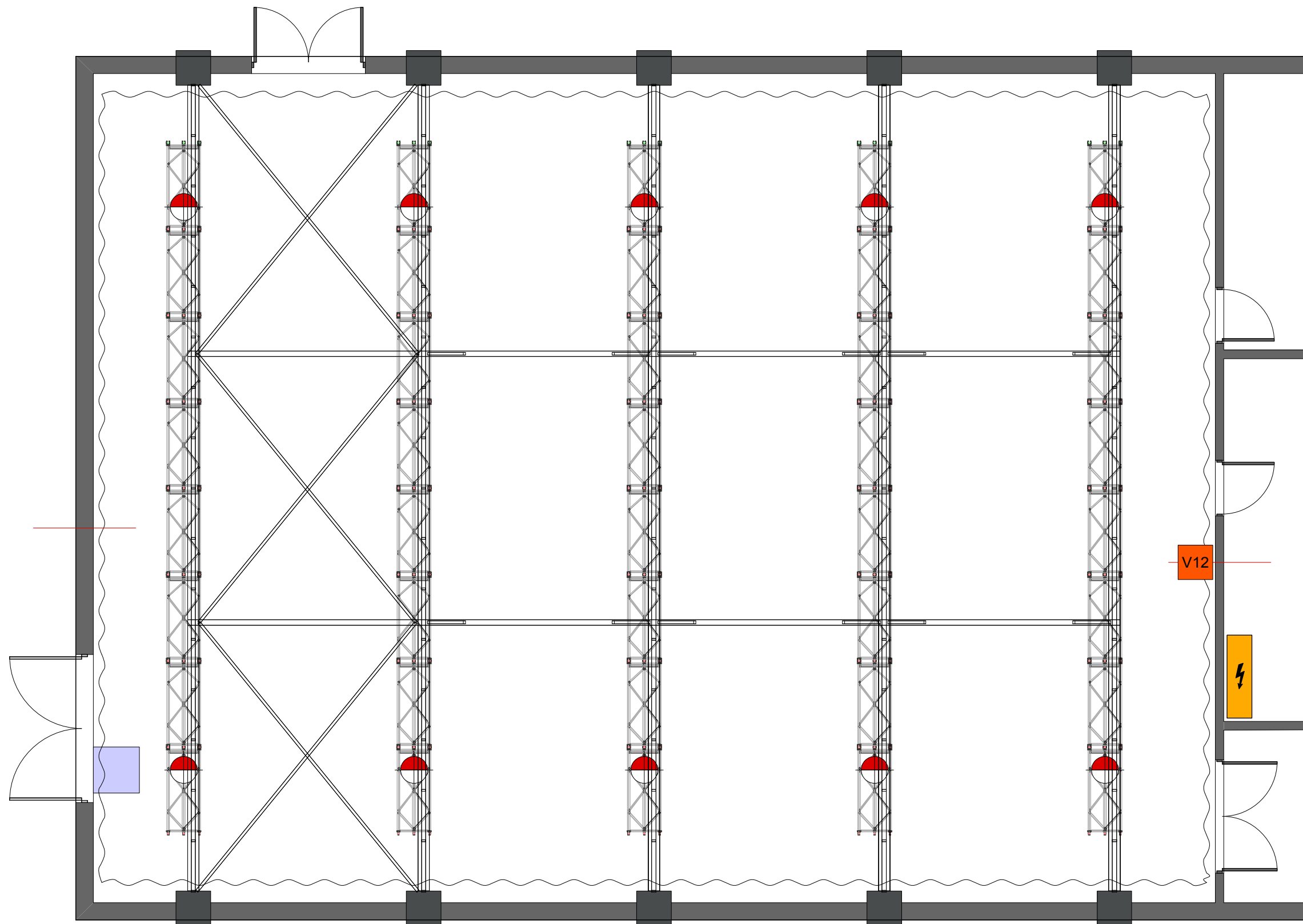
**Sideview**



**ISO View**



 <p><b>AED Studios</b>                  Fabrikstraat 38                  2547 Lint                  Belgium                  www.aedstudios.com</p>	Studio/Room	<b>Studio 04</b>	Papersize	A3	
	Plan type		<b>Overview</b>	Units	[mm]
				Scale	1:200
				Version	V1



 <p><b>AED Studios</b>          Fabrikstraat 38          2547 Lint          Belgium  <a href="http://www.aedstudios.com">www.aedstudios.com</a></p>	Studio/Room	<b>Studio 04</b>	Papersize A3
	Plan type	<b>Empty plot</b>	Units [mm]
			Scale 1:75
			Version V1