

### Dimensions Studio

Surface studiofloor = 193m<sup>2</sup>  
Dimensions Entrance Gate = 2m50W x 2m60H

### Dimensions Beams Studio

Height to beams = 07m30  
Height to ceiling = 08m50  
Distance between beams = 04m00

### Loading Figures Beams Studio

Max. load/beam = 4000kg/beam or qload = 200kg/m  
Max. allowed loads/beam  
- center point (CPL) = 1700 kg (middle of a beam)  
- double point (TPL) = 1400 kg (each point on 1/3th of the total beam length)  
Max allowed floorpressure = 1000kg/m<sup>2</sup>

### Electrical Power

2 x CEE125A connection 5p (3PH+N+E)  
2 x CEE32A connection 5p (3PH+N+E)  
Cable passages to backstage area and technical area  
Main Circuit board

### Standard Rigging & Trussing

05 x Black X30D truss, length = 9m00  
Each truss rigged on 2 x 0,5T Hoist  
Span between hoists = 06m95  
Maximum trim = 06m80  
All hoist rigged upside down  
04 x Black X30D truss, length = 6m00  
Trusses are scaffold underneath 2 x 9m00 trusses (above greenkey)  
See plan for exact dimensions.  
02 x Manfrotto WindUp Black, on wheels  
01 x V12 Hoistcontroller  
The hoistcontroller is connected to one of the existing CEE32A connectors, but can be unplugged if required.

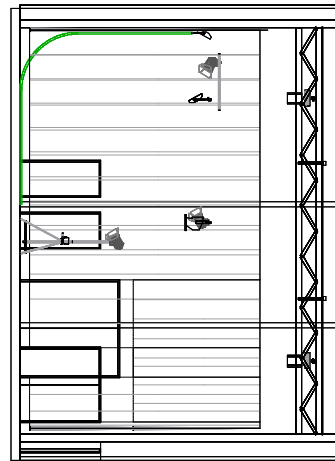
### Standard Lighting kit

06 x ACP 1kW (4 installed in the trussing, 2 on a WindUp)  
05 x Softlight 2kW (installed in trussing)  
06 x ACP 1kW (4 installed in the trussing, 2 on a WindUp)  
01 x Dimmerrack - 12ch  
The dimmer is connected to one of the existing CEE32A connectors, but it can be unplugged if required.  
01 x Leprecon 624 (Small conventional lighting desk)

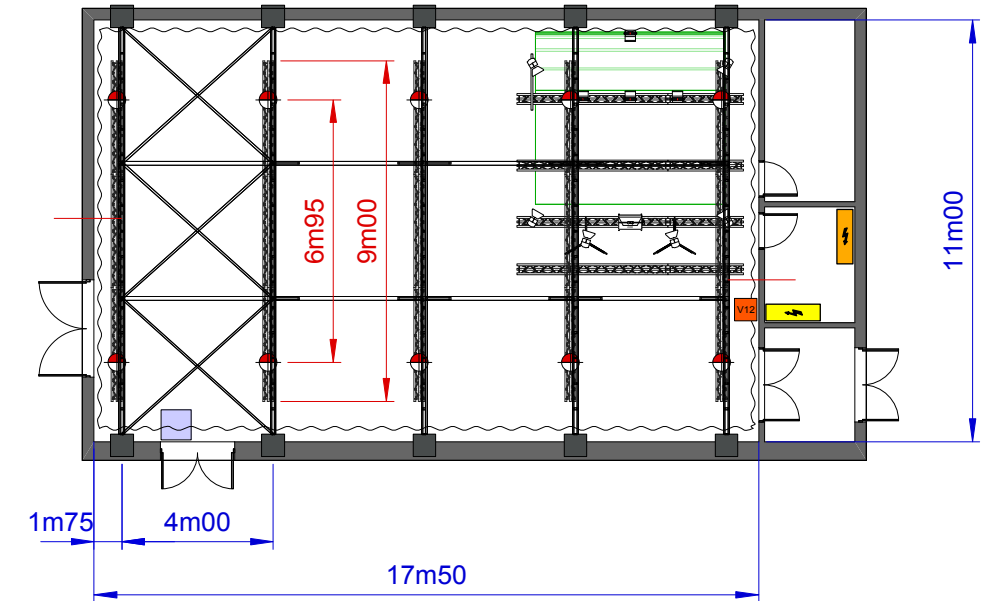
### Other Information:

The studio is equipped with a heating system.

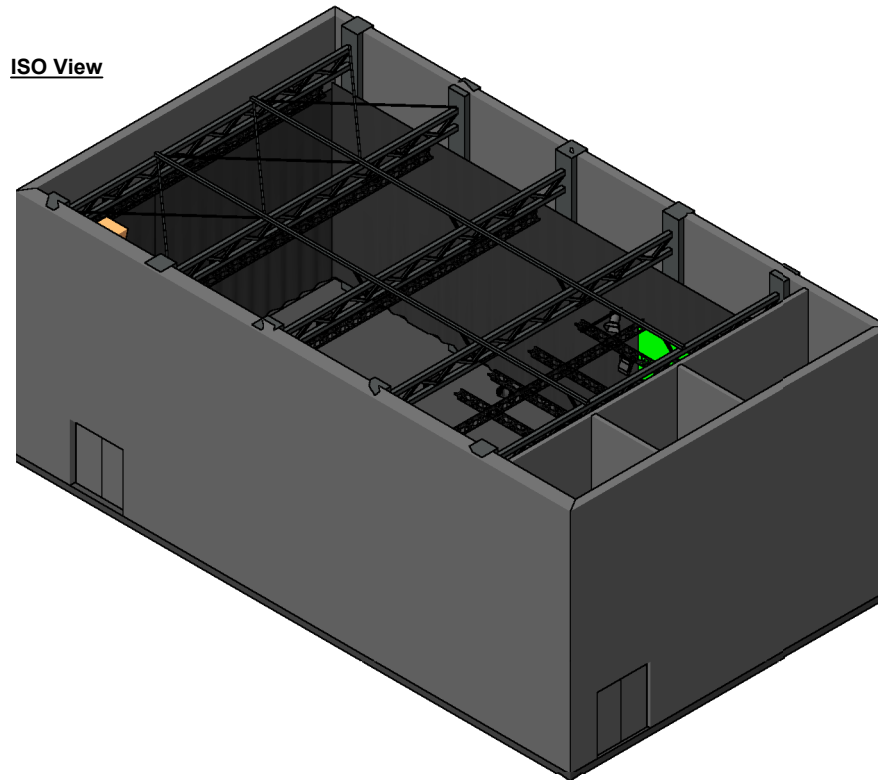
Frontview



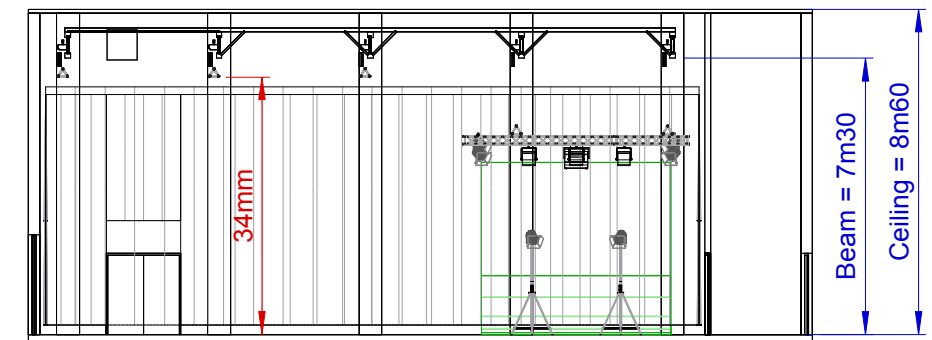
Topview



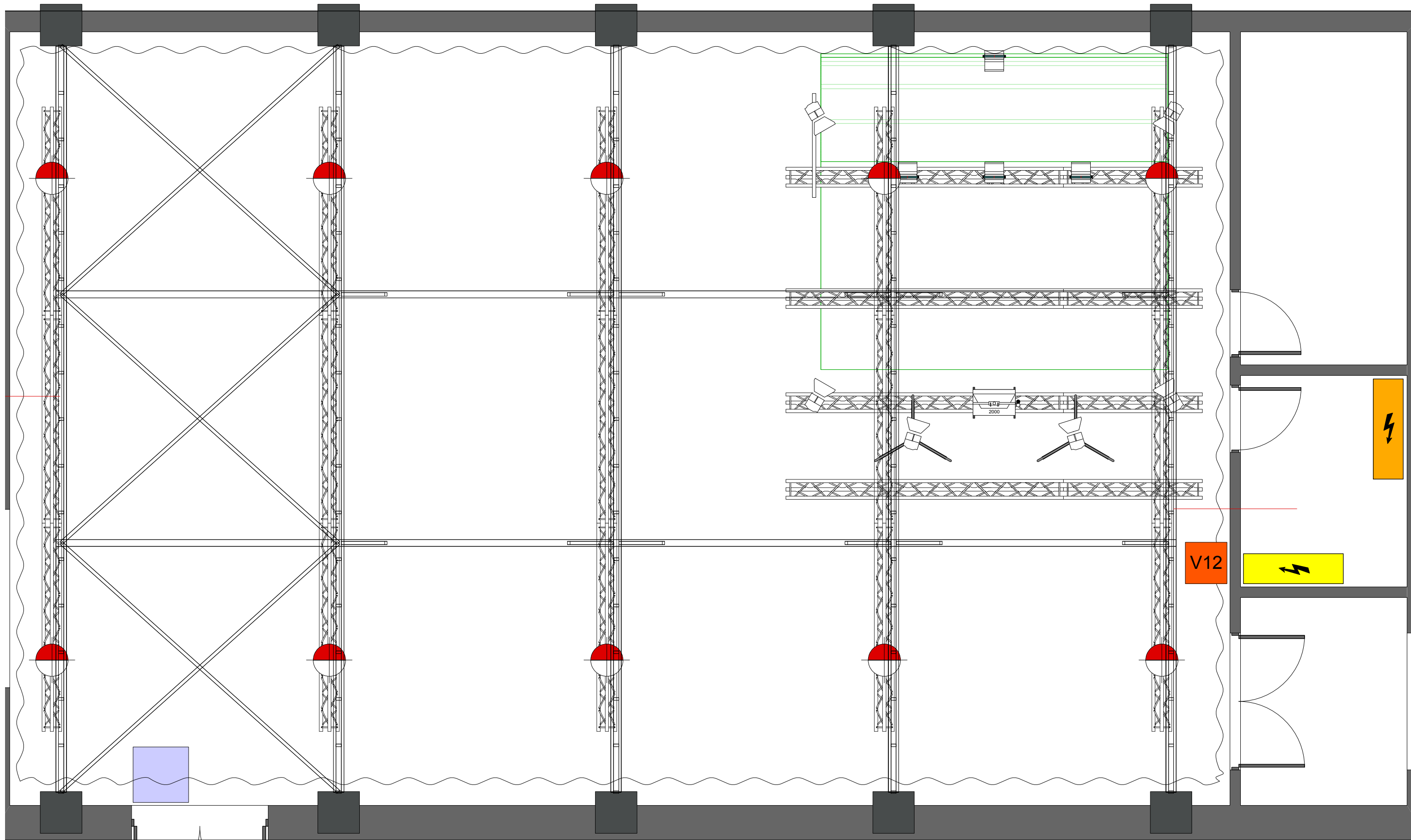
ISO View



Sideview

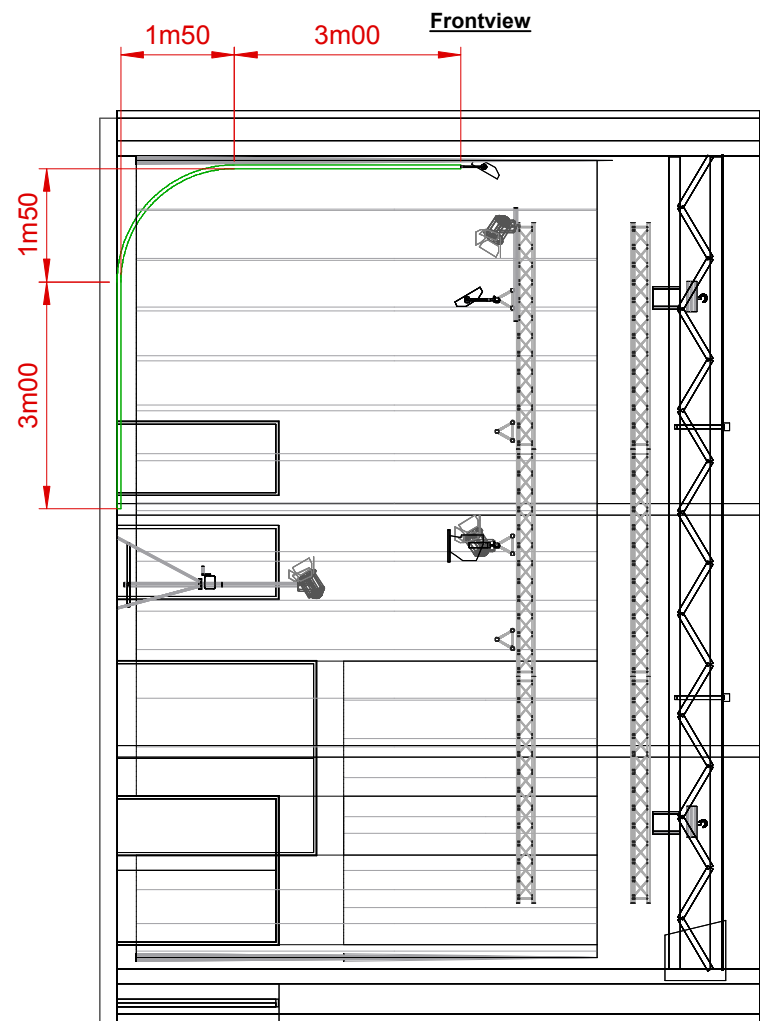


 <b>AED Studios</b> Fabriekstraat 38 2547 Lint Belgium www.aedstudios.com	Studio/Room	<b>Studio 05</b>	Papersize A3
		<b>Overview</b>	Units [mm]
	Plan type		Scale 1:200
			Version V1

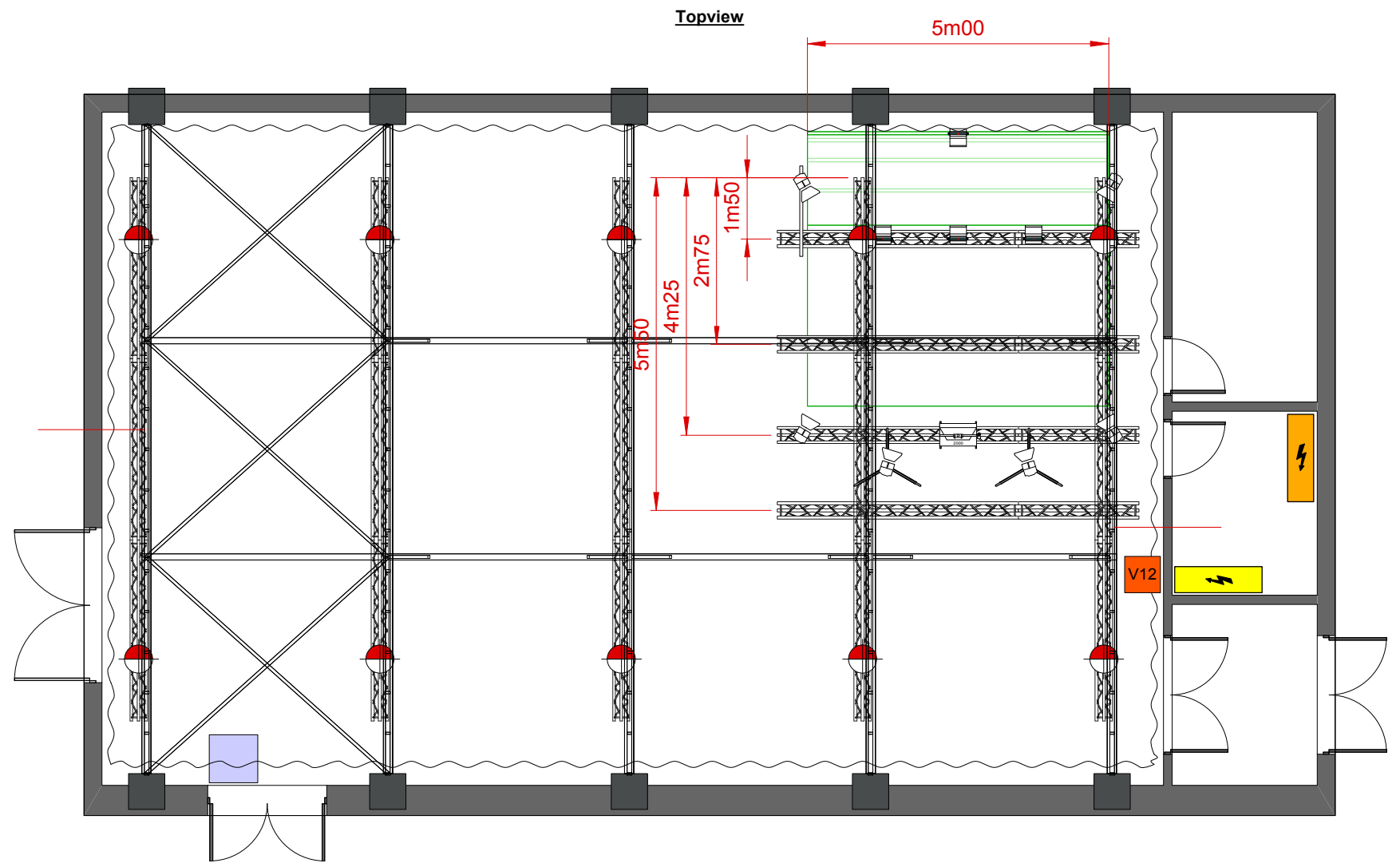



**AED Studios**  
 Fabrikstraat 38  
 2547 Lint  
 Belgium  
[www.aedstudios.com](http://www.aedstudios.com)

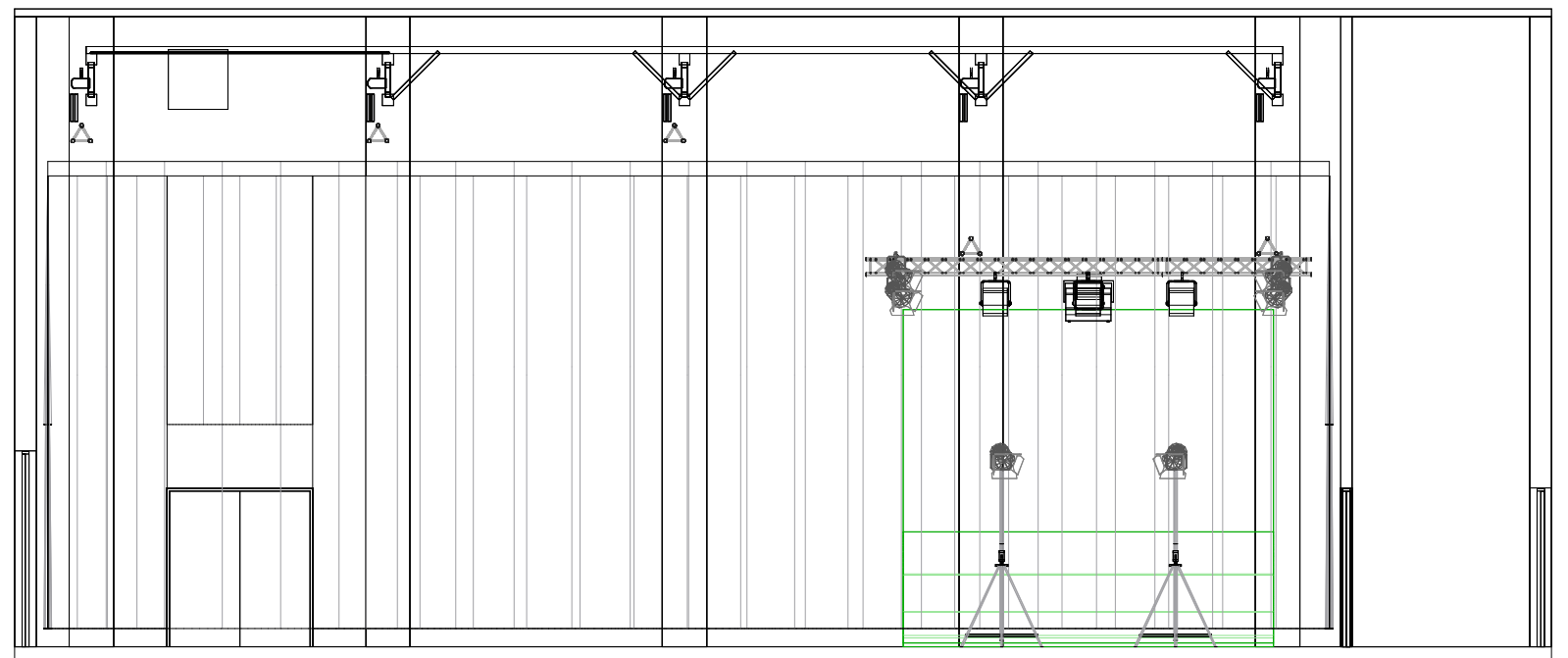
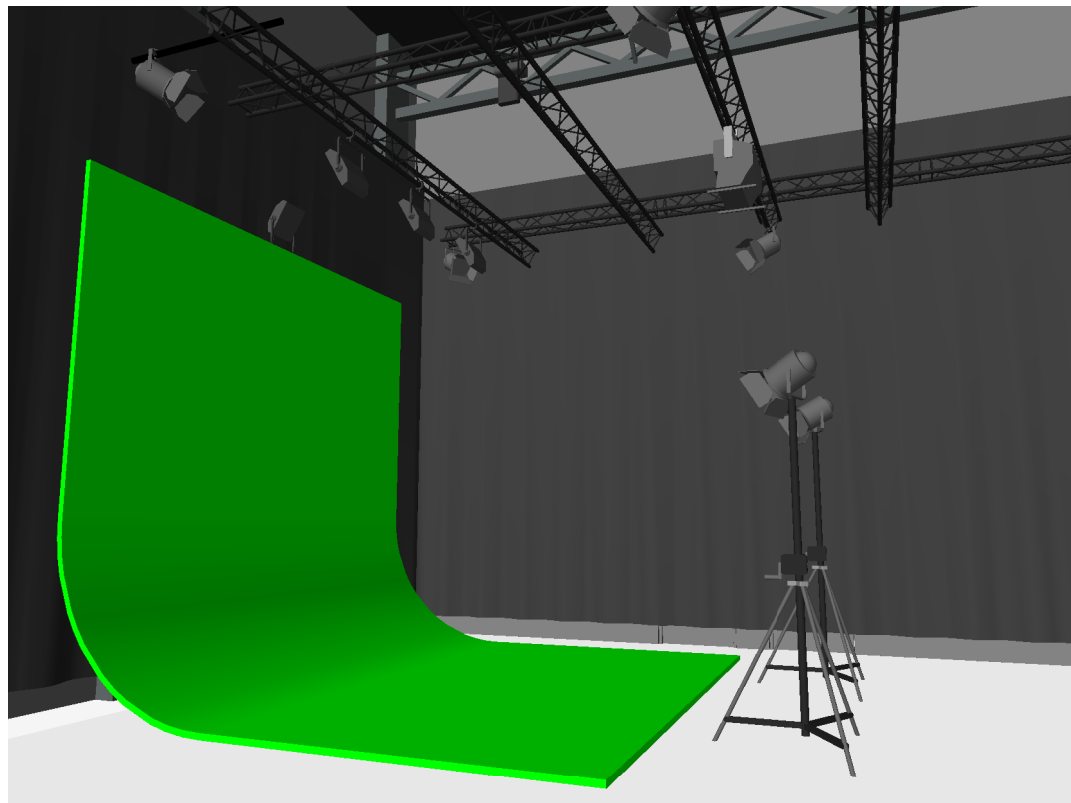
Studio/Room	<b>Studio 05</b>	Papersize	A3
Plan type	<b>Empty Plot</b>	Units	[mm]
		Scale	1:50
		Version	V1



Camera View



Frontview



 <p><b>AED Studios</b> Fabriekstraat 38 2547 Lint Belgium www.aedstudios.com</p>	<p>Studio/Room</p> <p><b>Studio 05</b></p>	<p>Papersize A3</p>
	<p>Plan type</p> <p><b>GreenKey Details</b></p>	<p>Units [mm]</p>
		<p>Scale 1:100</p>
		<p>Version V1</p>