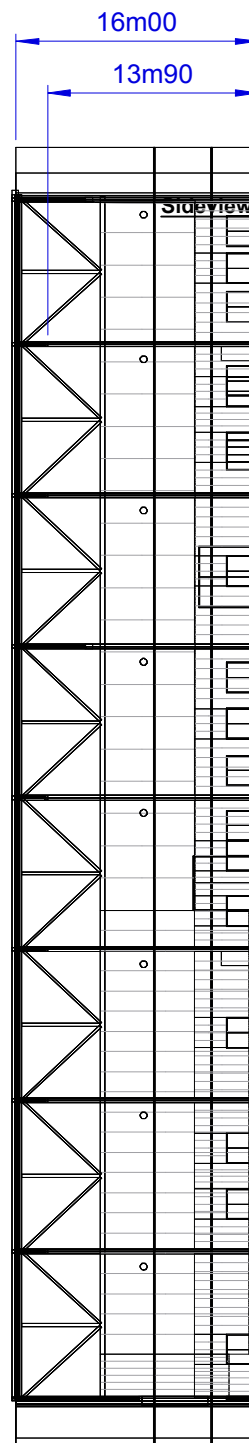
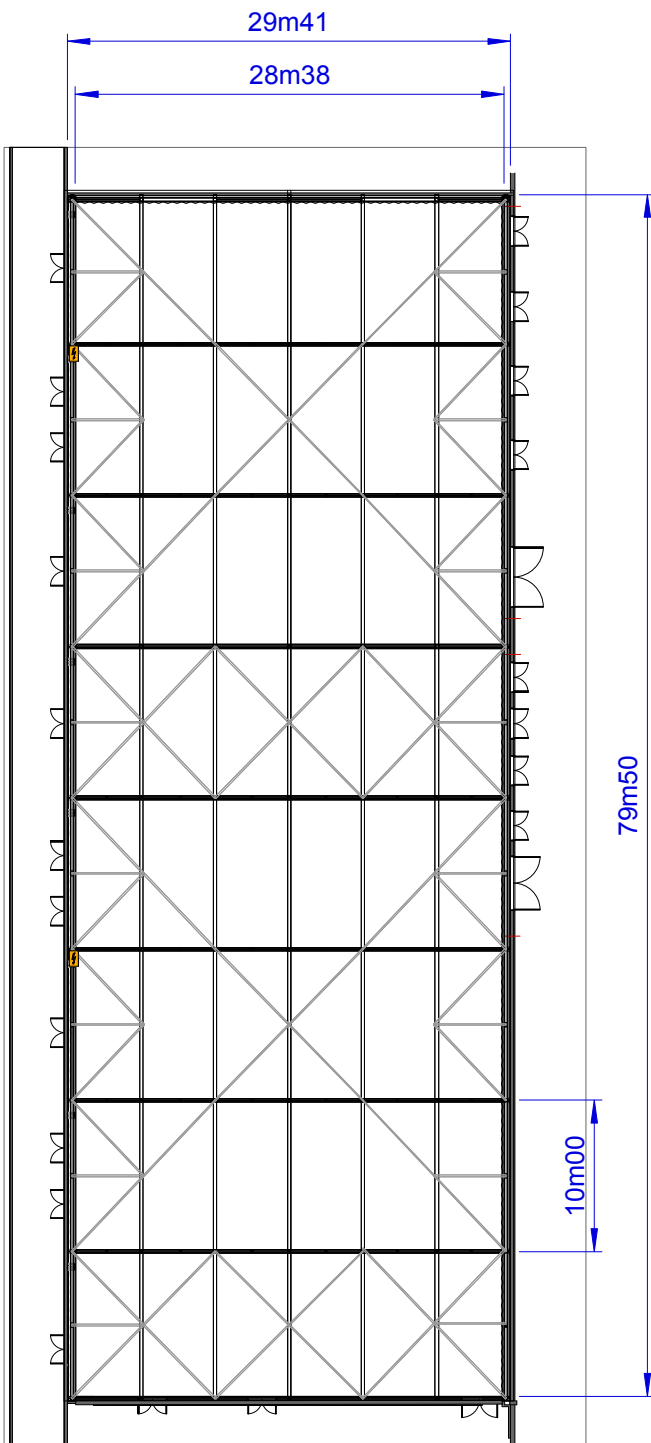
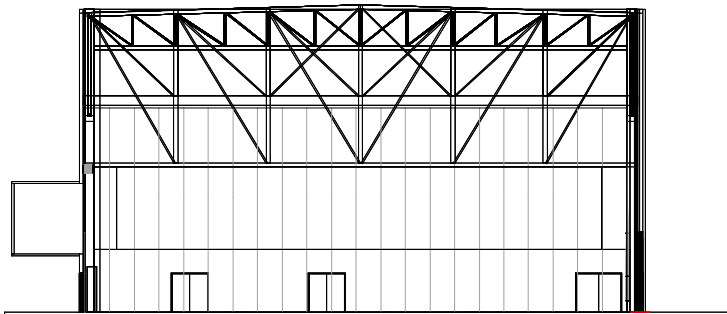


**Topview**



**Frontview**



**Dimensions Studio**

Surface studio floor = 2400m<sup>2</sup>  
 Dimensions Entrance Gate = 3m40W x 4m10H

**Dimensions Beams Studio**

Height to beams = 13m90  
 Height to ceiling = 16m00  
 Distance between beams = 10m00

**Loading Figures Studio**

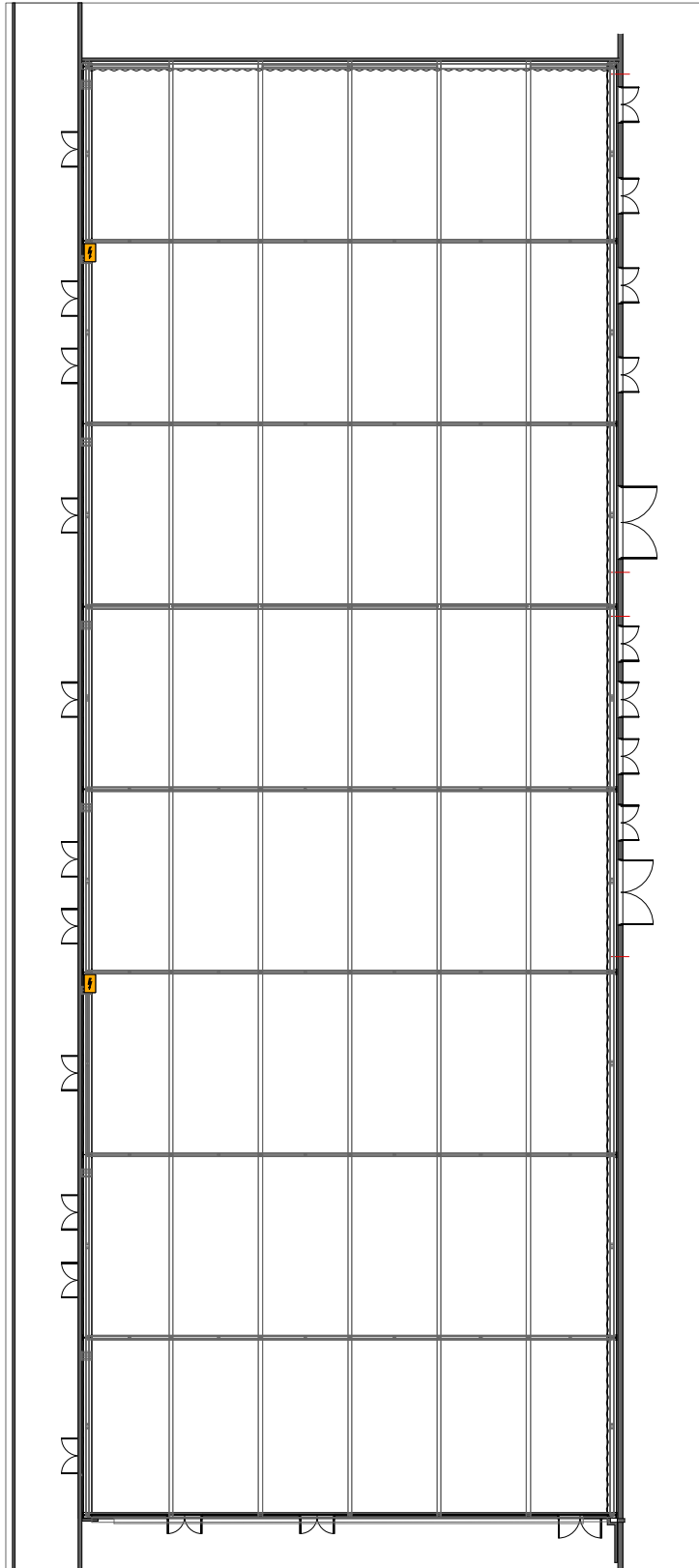
Max. load/beam = 6000kg/beam or qload = 500kg/m  
 Max. allowed loads/beam  
 - center point (CPL) = 7500 kg (middle of a beam)  
 - double point (TPL) = 3500 kg (each point on 1/3th of the total beam length)  
 Max allowed floorpressure = 1000kg/m<sup>2</sup>

**Electrical Power**

6 x 400A Powerlock connection  
 4 x CEE125A connection 5p (3PH+N+E)  
 4 x CEE32A connection 5p (3PH+N+E)  
 Cable passages to backstage area and technical area  
 Main Circuit board

**AED Studios**  
 Fabriekstraat 38  
 2547 Lint  
 Belgium  
 www.aedstudios.com

Studio/Room	<b>Studio 07</b>	Papersize A4
Plan type	<b>Overview</b>	Units [mm]
		Scale 1:500
		Version V1



 <p><b>AED Studios</b> Fabriekstraat 38 2547 Lint Belgium <a href="http://www.aedstudios.com">www.aedstudios.com</a></p>	Studio/Room	<b>Studio 07</b>	Papersize A4
	Plan type	<b>Empty Plot</b>	Units [mm]
			Scale 1:400
			Version V1