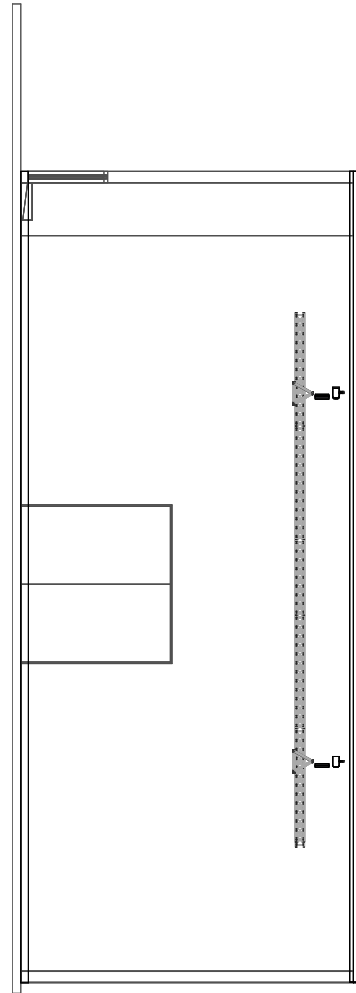
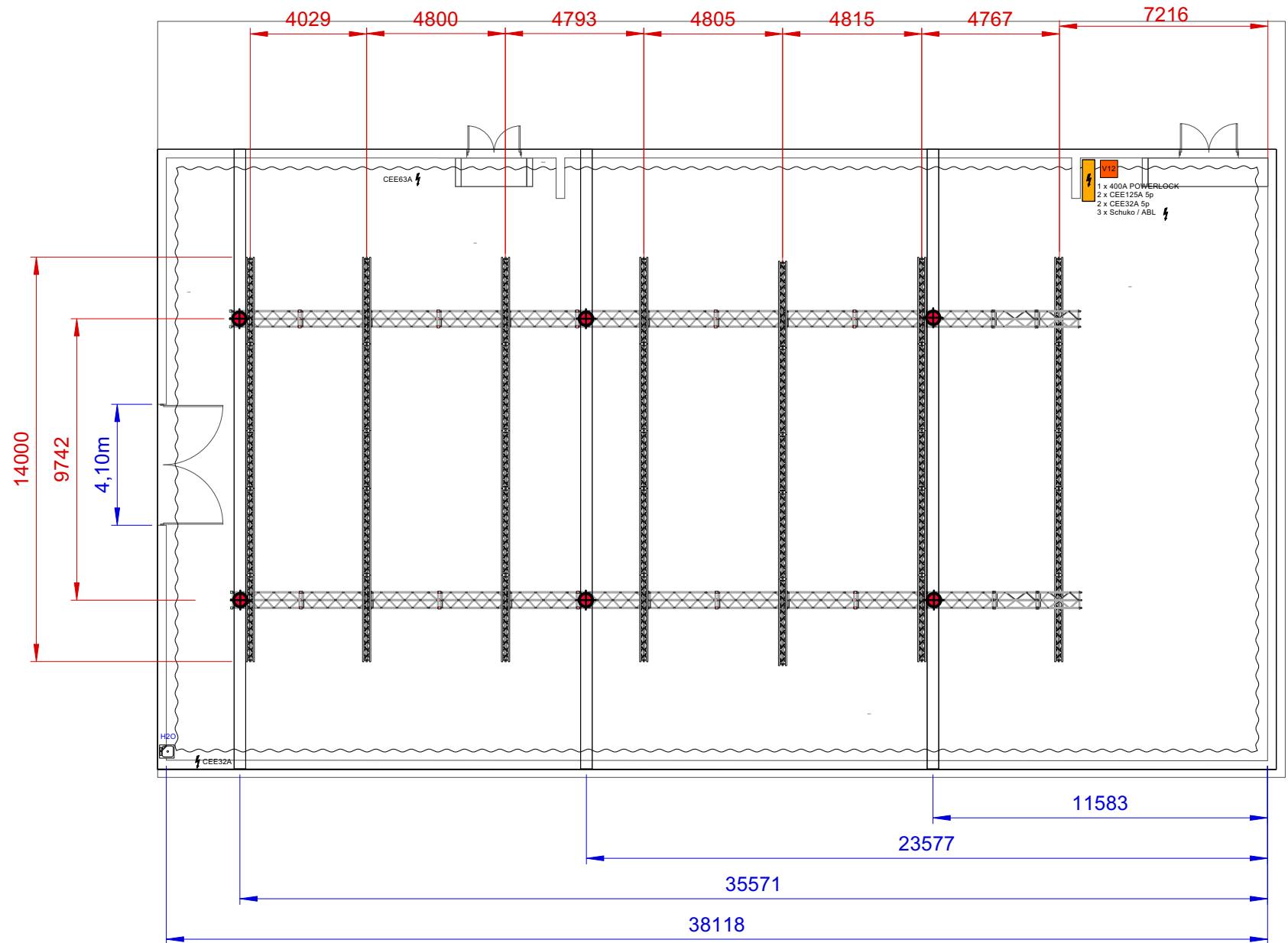


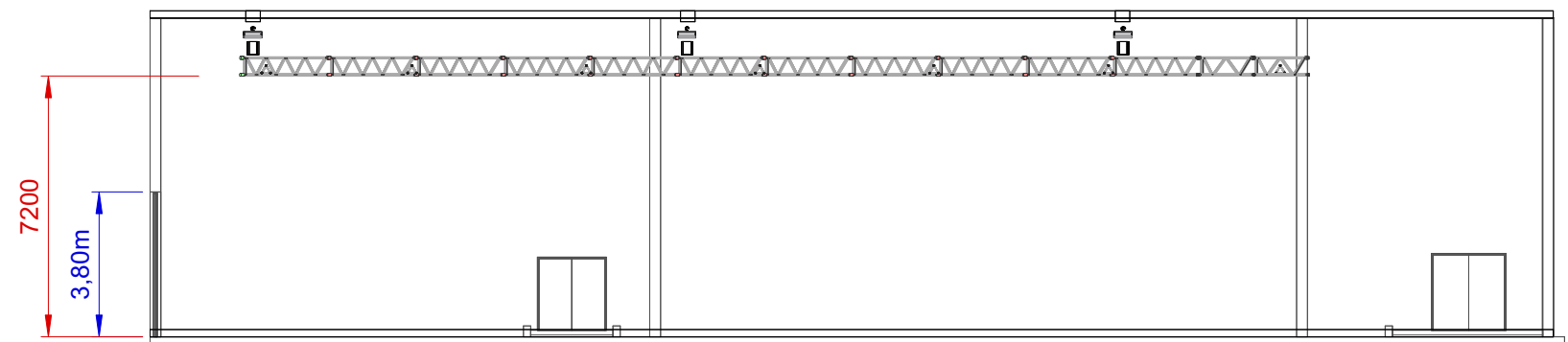
Sideview



Topview



Frontview



**Dimensions Studio**  
 Surface studiofloor = 800m<sup>2</sup>  
 Dimensions Entrance Gate = 4m10W x 3m80H

**Dimensions Beams Studio**  
 Height to ceiling = 08m60

**Loading figures Main span Studio**  
 Max Load main span "Total" = 2500kg  
 Max Load main span "UDL" = 5 x 500kg  
 Max Load main span "TPL" = 1250kg

**Loading figures Floor Studio**  
 Max Floor pressure = 1000kg/m<sup>2</sup>

**Electrical Power**  
 1 x 400A Powerlock connection  
 2 x CEE125A connection 5p (3PH+N+E)

2 + 1 x CEE32A connection 5p (3PH+N+E)  
 3 x ABL/Schuko 16A

**Standard Rigging & trussing**  
 02 x Black ALC Truss, length = 29m40  
 Each truss rigged on 3 x 1T Hoist  
 Span between hoists = See plan  
 Maximum trim = 07m20  
 All hoist rigged upside down  
 07 x Black X30D Truss, length = 14m00  
 Trusses installed in ALC Trusses



**AED Studios**  
 Fabriekstraat 38  
 2547 Lint  
 Belgium  
 www.aedstudios.com

Studio/Room	<b>Studio 14</b>	Papersize	A3
Plan type	<b>Overview</b>	Units	[mm]
		Scale	1:200
		Version	V2.0