



# STUDIO 12

technische fiche



# STUDIO 12



## STUDIO DIMENSIONS

STAGE FLOOR 3.000M<sup>2</sup> (32.292FT<sup>2</sup>)

LENGTH 75M (246FT)

WIDTH 40M (131FT)

HEIGHT TO BEAMS 20M10 (66FT)

HEIGHT TO CEILING 22M (72FT)

FLOOR LOAD 1.000KG/M<sup>2</sup>

GATE 2 GATES: 3,6M X 4,45M (11FT X 13FT)

DISTANCE BETWEEN MAIN BEAMS 10M80

MAIN BEAMS LOAD 400KG/METER (293LBS/FT)

MAIN BEAMS POINT LOAD 7.000KG/BEAM (15.400LBS)

DISTANCE BETWEEN SUB BEAMS 5M

SUB BEAMS MAX LOAD 100KG/M

SUB BEAMS POINT LOAD 1.500KG/BEAM

## CAPACITY

DINNER 1.500P

RECEPTION 3.000P

ACADEMIC 2.000P

## POOL

875M<sup>2</sup> (9.418,5FT<sup>2</sup>)

35M (115FT) LENGTH

25M (82FT) WIDTH

3,80M (12FT) DEPTH (NORMAL WATER LEVEL)  
4M05 TILL BOTTOM

MAX LOAD 500KG/M<sup>2</sup>

BLACKBOX POOL  
FILTRATION SYSTEM  
HEATING SYSTEM UP TO 29°C  
VOLUME: 3,4 MILLION LITRES  
AUTOMATED WATER QUALITY CONTROL  
POOL = COVERED

## POWER

4X 125A CEE 5P

4X 32A CEE 5P

3X 400A POWERLOCK

CABLE PASSAGES TO BACKSTAGE AND  
TECHNICAL AREA

## OTHER

FLOORHEATING SYSTEM

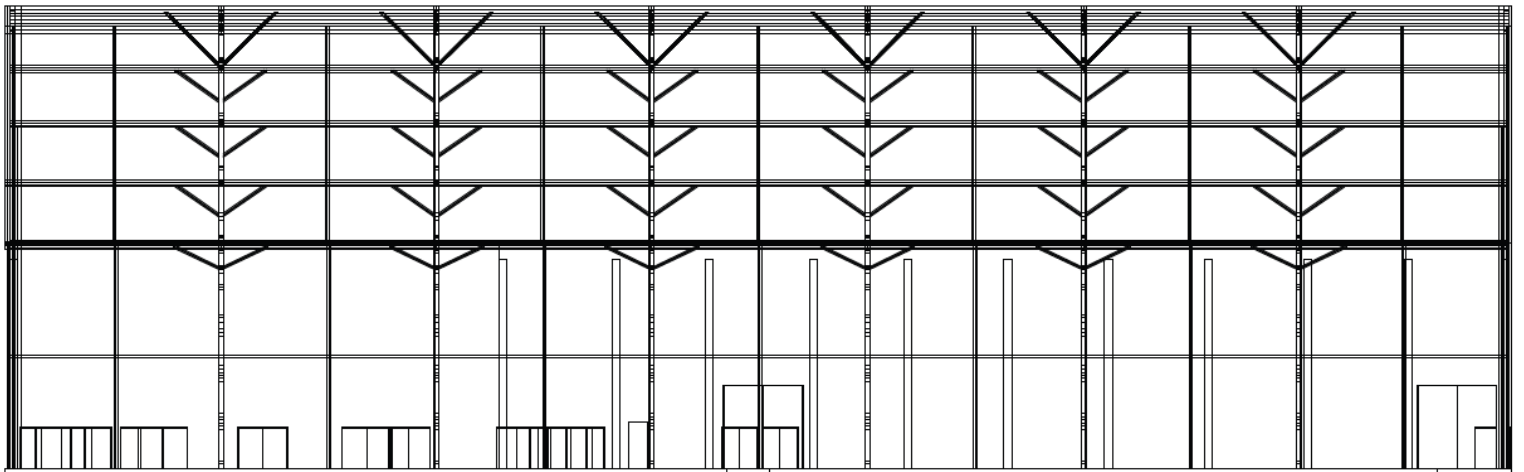
PULSION: CIRCUIT AT 8M (26FT) HEIGHT  
EXTRACTION: CIRCUIT AT 4M (13FT) HEIGHT

BLACK CURTAINS

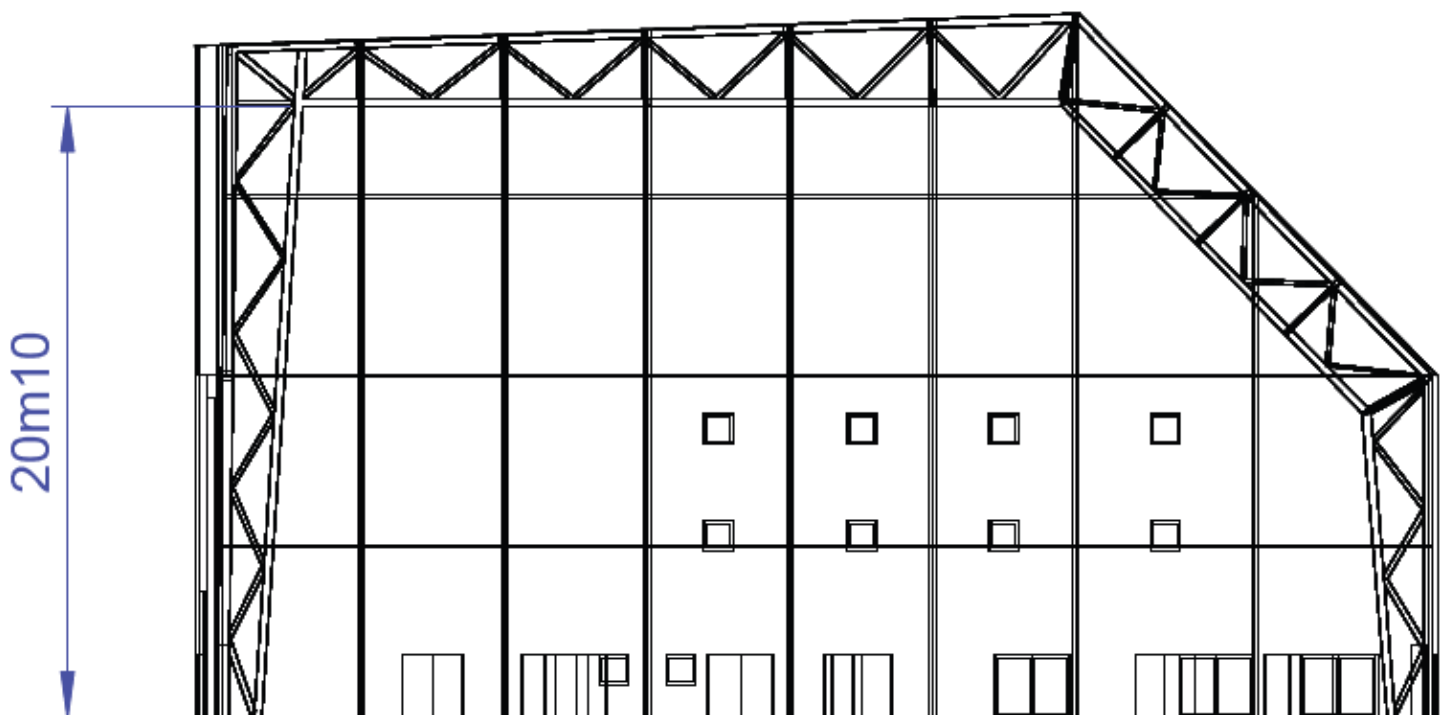
Technische fiche

# STUDIO 12

## SIDVIEW

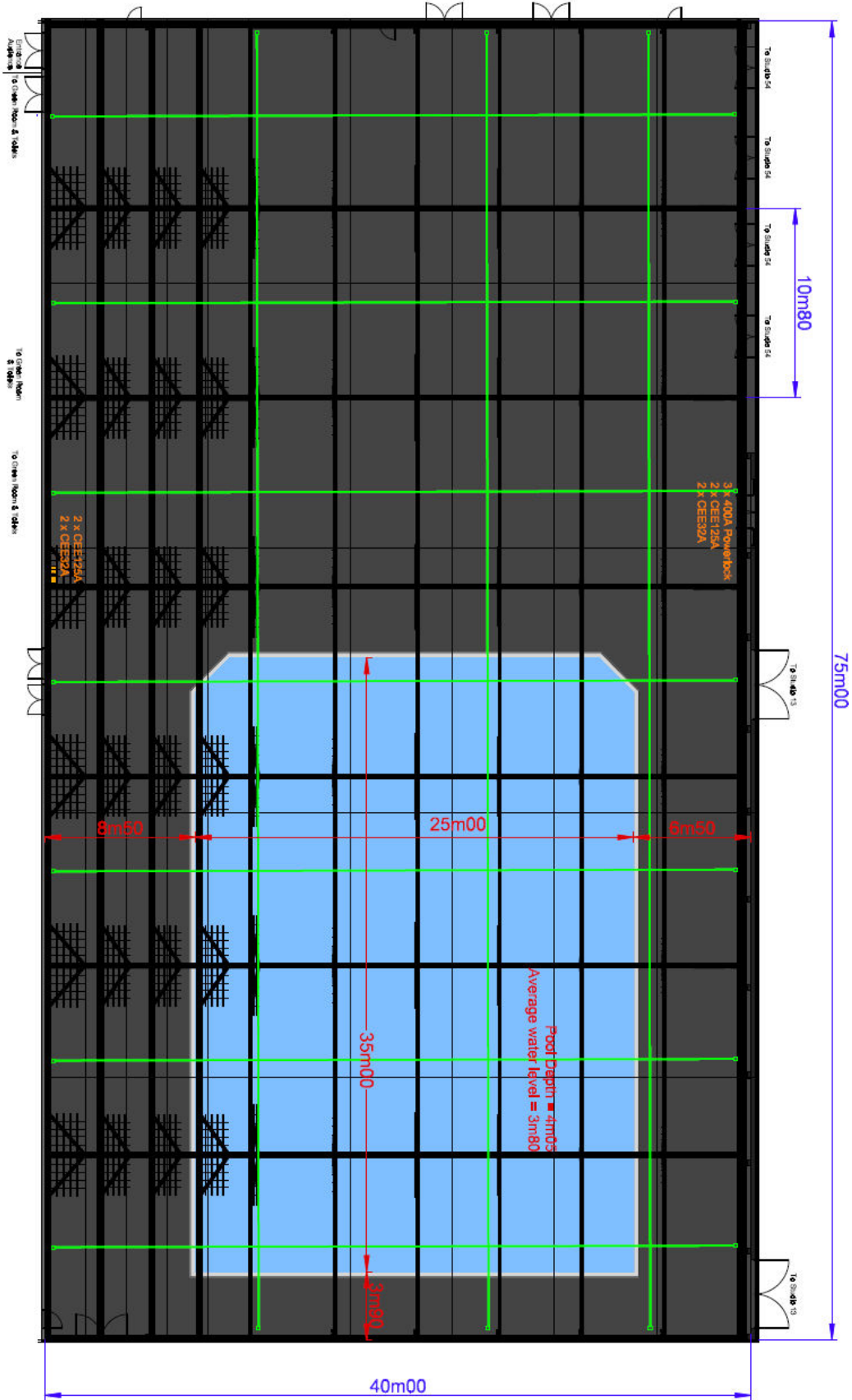


## FRONTVIEW



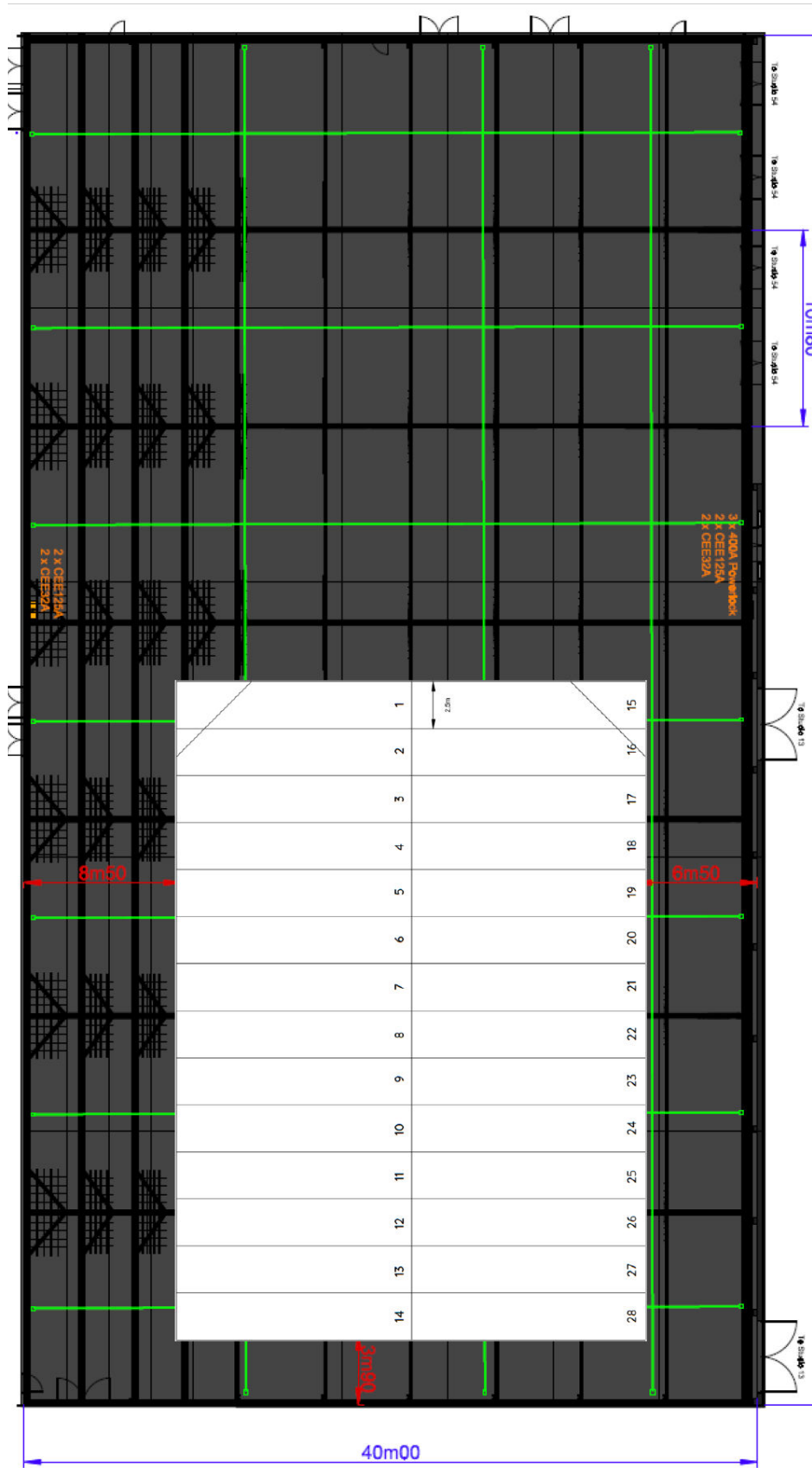
# STUDIO 12

## TOPVIEW



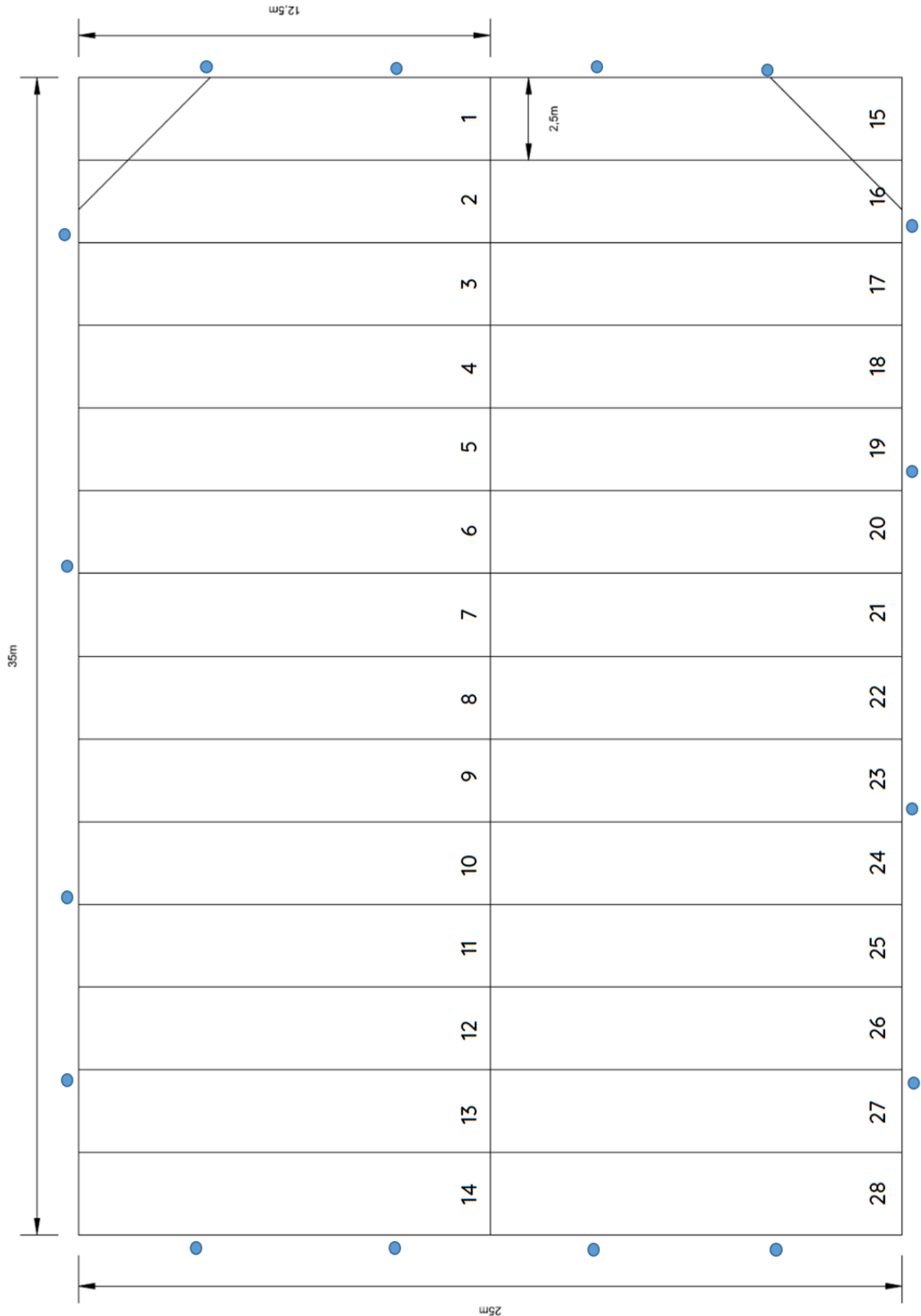
# STUDIO 12

## COVER WATER BASIN



# STUDIO 12

## COVER WATER BASIN



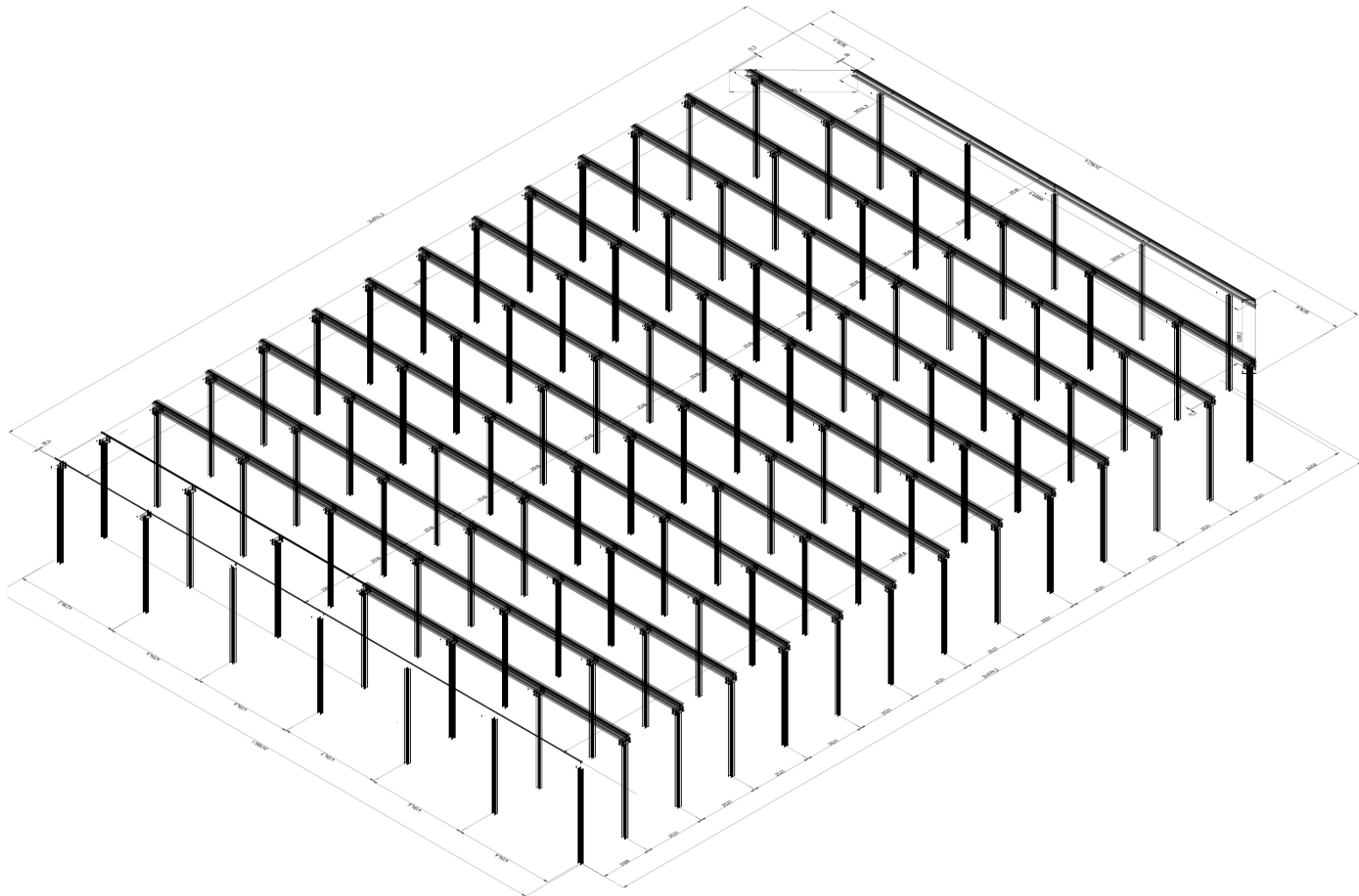
Technische fiche

# STUDIO 12



AED Studios

## COVER WATER BASIN



Technische fiche

# STUDIO 12



## COVER WATER BASIN

