



# STUDIO 7

technische fiche



Technische fiche

# STUDIO 7



AED Studios

## STUDIO DIMENSIONS

STAGE FLOOR 2.400M<sup>2</sup> (12.917FT<sup>2</sup>)

LENGTH 80M (131FT)

WIDTH 30M (98FT)

HEIGHT TO BEAMS 14,6M (48FT)

DISTANCE BETWEEN BEAMS 10M (33FT)

HEIGHT TO CEILING 16M (52FT)

FLOOR LOAD 1TON/M<sup>2</sup> (23.735LBS/FT<sup>2</sup>)

GATE 2 GATES: 3,4M X 4,1M (11FT X 13FT)

WEIGHT LOADING BEAMS 6.000KG/BEAM: 500KG/M  
(13.230LBS/BEAM: 3.617LBS/FT)

POINT LOAD BEAMS 7.500KG (16.537,5LBS) IN THE MIDDLE  
3.500KG (7.717,5LBS) SPREAD OVER 2 POINTS

## POWER

4X 125A CEE 5P

4X 32A CEE 5P

6X 400A POWERLOCK

CABLE PASSAGES TO BACKSTAGE AND TECHNICAL AREA

## OTHER

FLOORHEATING SYSTEM

BLACK BACKDROP: 190M (525FT)

## CAPACITY

DINNER 1.000P

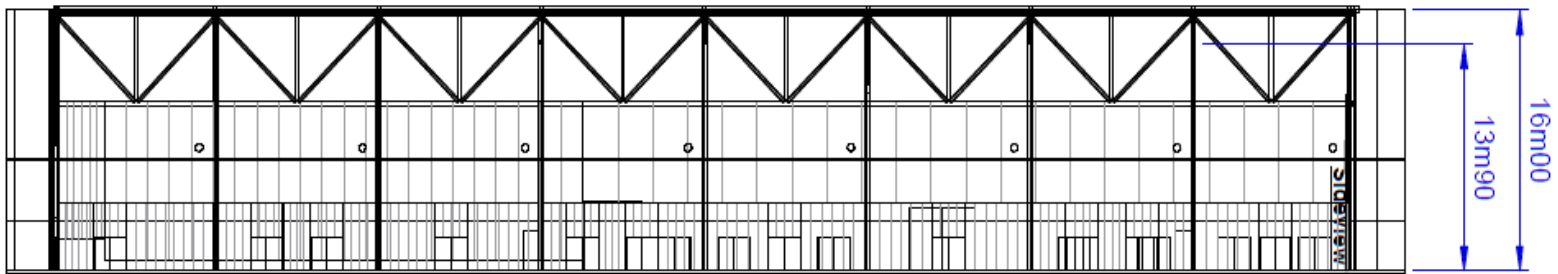
RECEPTION 2.400P

ACADEMIC 3.000P

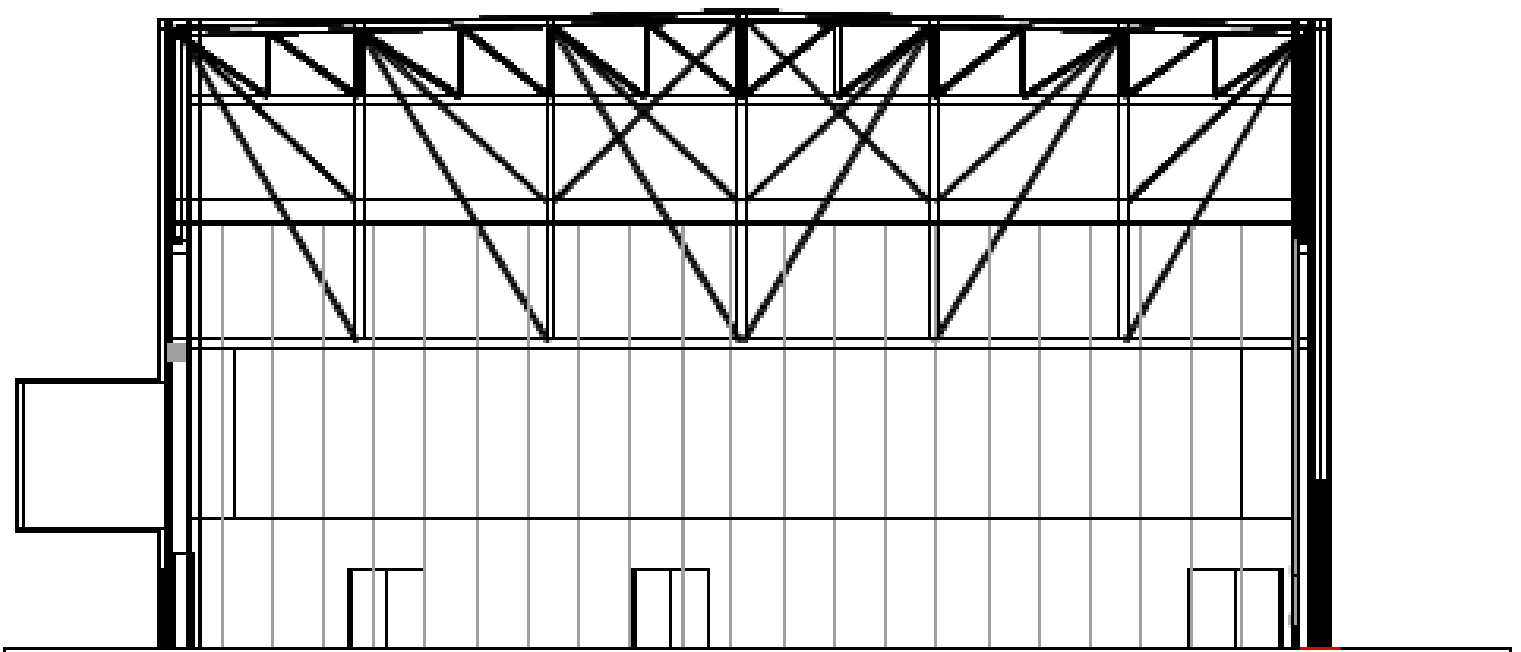
Technische fiche

# STUDIO 7

## SIDVIEW



## FRONTVIEW



Technische fiche

# STUDIO 7

## TOPVIEW

