



STUDIO 9

technische fiche



Technische fiche

STUDIO 9



AED Studios

STUDIO DIMENSIONS

STAGE FLOOR 1.200M² (12.917FT²)

LENGTH 40M (131FT)

WIDTH 30M (98FT)

HEIGHT TO BEAMS (A) 8.38M (27FT)

DISTANCE BETWEEN BEAMS 5M (16FT)

HEIGHT TO BEAMS (B) 10.28M (34FT)

HEIGHT TO CEILING 10.3M (34FT)

FLOOR LOAD 2TON/M² (47.470LBS/FT²)

GATE 3,5M X 4,2M (11FT X 14FT)

POWER

2X 125A CEE 5P

2X 32A CEE 5P

2X 400A POWERLOCK

CABLE PASSAGES TO BACKSTAGE AND TECHNICAL AREA

OTHER

HEATING SYSTEM

BLACK BACKDROP: 120M (394FT)

RIGGING & TRUSSING

6X BLACK ALC TRUSS - L = 19M20

6X BLACK ALC TRUSS - L = 14M20
EACH TRUSS RIGGED ON 2X 1T HOIST
SPAN BETWEEN HOISTS - SEE PLAN
MAXIMUM TRIM = 7M75
ALL HOISTS RIGGED UPSIDE DOWN

2X V12 HOIST CONTROLLER

THE CONTROLLERS ARE CONNECTED
TO TWO OF THE EXISTING CEE 32A
CONNECTORS - CAN BE UNPLUGGED,
IF REQUIRED

CAPACITY

DINNER 450P

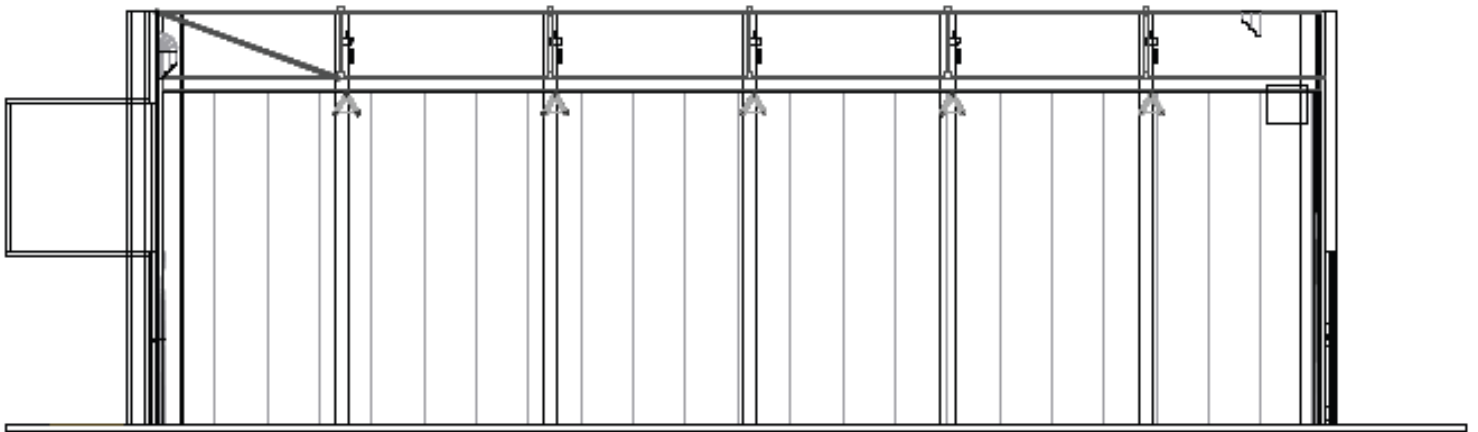
RECEPTION 1.200P

ACADEMIC 800P

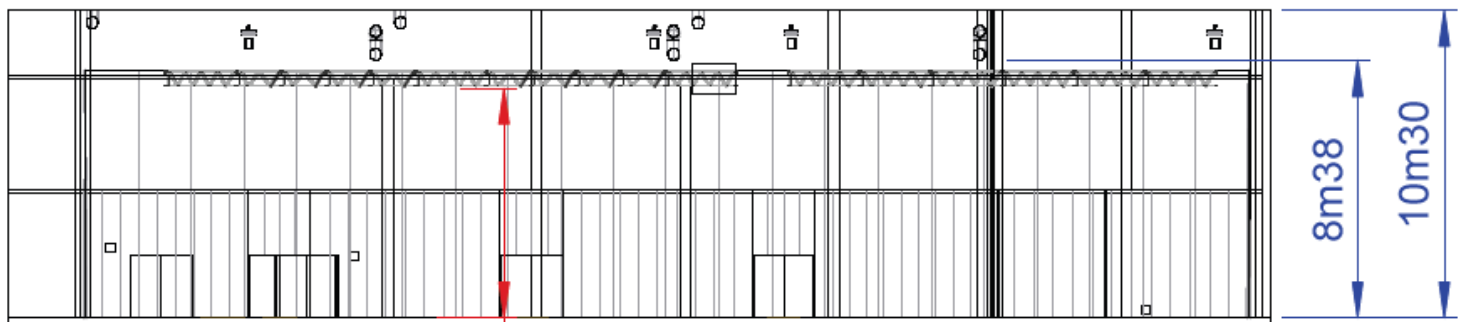
Technische fiche

STUDIO 9

SIDEVIEW



FRONTVIEW



Max trim = 7m75

Technische fiche

STUDIO 9

TOPVIEW

